

# VHIMS – IMS-API /health-service-incident/v2

API Specification  
2.0.5

Enterprise Technology Branch,  
Department of Health

**OFFICIAL**



Department  
of Health

**OFFICIAL**

# Contents

<b>Document Control</b> .....	<b>3</b>
<b>API Change History Overview</b> .....	<b>3</b>
<b>Authorisations</b> .....	<b>7</b>
<b>References</b> .....	<b>7</b>
<b>1 Summary</b> .....	<b>8</b>
1.1 Overview.....	8
1.2 Swagger Definition .....	14
1.3 Connection Details .....	15
1.4 Security Requirements .....	15
<b>2 Interface Details</b> .....	<b>16</b>
2.1 GET /api-base-uri/v2/resource .....	16
2.2 POST /health-service-incident/v2/clinicals .....	22
2.3 PUT /health-service-incident/v2/clinicals/{id} .....	39
2.4 POST /health-service-incident/v2/ohs-staffs .....	42
2.5 PUT /health-service-incident/v2/ohs-staffs/{id} .....	56
2.6 POST /health-service-incident/v2/ohs-visitors .....	59
2.7 PUT /health-service-incident/v2/ohs-visitors/{id}.....	72
2.8 POST /health-service-incident/v2/hazards .....	75
2.9 PUT /health-service-incident/v2/hazards/{id} .....	85
2.10 DELETE /health-service-incident/v2/delete/{id} .....	88

# Document Control

Version	Release Date	Author	Summary of changes made
2.0.0	17/07/2024	DSP Support Team	Initial draft
2.0.1	21/08/2024	DSP Support Team	Update API change history overview Adding Pre-Production Staging url
2.0.2	28/10/2024	DSP Support Team	Add conditions for duration_of_harm, level_of_treatment questions for Clinical records Amend is_open_disclosure to include missing value "notapplicable" Adding API testing guidelines section
2.0.3	20/12/2024	DSP Support Team	Update Connection Detail section (1.3.1) to include api_release_date
2.0.4	28/03/2025	DSP Support Team	Corrected "brand_name" for clinical incidents: Set as optional (previously documented incorrectly, section 2.2.1). Corrected "api_release_date" for V1 Production: Set to 2021-08-06 (previously incorrect, section 1.3.1). Added new api_release_date for V2 (Production, PreProduction, PreProductionStaging) follow release on 16/04/2025
2.0.5	13/06/2025	DSP Support Team	Fix validation issue on medication_ivfluids.problem (notsigned)  Update api_release_date for V2 (Production, PreProduction, PreProductionStaging)

## API Change History Overview

Version	Date	Change overview	Affected sections
2.0.0	24/06/2024	Adding new fields in organisation section: organisation.dh_campus_code, organisation.ward_type, organisation.specialty_type (PBI: 534381, 534383, 534384)	2.2.1, 2.4.1, 2.8.1, 2.9.1
2.0.0	24/06/2024	Remove is_pandemic_related field (PBI: 537618)	2.2.1, 2.4.1, 2.8.1, 2.9.1
2.0.0	24/06/2024	Add new value to the assessment_care_plan.problem	2.2.1

Version	Date	Change overview	Affected sections
		(PBI: 538180)	
2.0.0	24/06/2024	Amend behaviour problem within the Behaviour clinical event type Amend the behaviour.behaviour_problems list (PBI: 538235)	2.2.1
2.0.0	24/06/2024	Amend type of restraint within the Behaviour clinical event type. Amend the restrain_type_used list (PBI: 538248)	2.2.1
2.0.0	24/06/2024	Remove Seclusion as an event type – (event_types 79 is removed from the list) (PBI: 538258)	2.2.1
2.0.0	24/06/2024	Amend blood product type list, problem list. Blood_product.product_type accept multiple values separated with a pipe delimiter “ ” . (PBI: 538261)	2.2.1
2.0.0	24/06/2024	Add additional problems within the Deteriorating patient clinical event type (deteriorating_patient) Update the deteriorating_patient.problem list. (PBI: 538268)	2.2.1
2.0.0	24/06/2024	Add new classifications for type of fall within the Fall clinical event type fall) Update the fall.type list. (PBI: 538273)	2.2.1
2.0.0	25/06/2024	Amend investigations.problem list for testing/sampling process (PBI: 538274)	2.2.1
2.0.0	25/06/2024	Remove is_high_risk_involved (pMedPINCH) field from medication_ivfluids section. (PBI: 538279)	2.2.1
2.0.0	25/06/2024	Remove medication_class from Clinical and Hazard records. medication_ivfluids.medication_class medication_details.medication_class (PBI: 538291)	2.2.1, 2.8.1
2.0.0	25/06/2024	Amend problems within Medication and IV fluids clinical event type taxonomy. Update medication_ivfluids.process list (PBI: 538504)	2.2.1
2.0.0	25/06/2024	Remove duplicate problem type within the Medication Management hazard event type Update medication_management list (PBI: 538507)	2.8.1

Version	Date	Change overview	Affected sections
2.0.0	25/06/2024	Amend behaviour problem types within Aggression/behaviour OH&S event type Update behaviour_problems list for OHS Staff and OHS Visitor (PBI: 538509)	2.4.1, 2.6.1
2.0.0	25/06/2024	Remove 'fall from stairs' (fallfromstairs) and amend 'fall from height' (fallfromheight) problem types within Fall, Slip, Trip OH&S event type Update slip_trip_fall.type list for OHS-Staff and OHS-Visitor (PBI: 538511)	2.4.1, 2.6.1
2.0.0	25/06/2024	Remove is_emergency_response_called question Update emergency_response_type list Add new question what_happened .outcome_response_code_grey required when either code Grey (Unplanned) or Code Grey (planned) is reported. (PBI: 538668)	2.2.1, 2.4.1, 2.6.1, 2.8.1
2.0.0	25/06/2024	Remove followup.external_notifications question. (PBI: 538669)	2.2.1, 2.4.1, 2.6.1, 2.8.1
2.0.0	25/06/2024	Adding a new question followup.is_this_a_clinical_incident for clinical records. Remove followup.is_related_to_care_by_this_org question for hazard,ohs-staff and ohs-visitor record. (PBI: 538681)	
2.0.0	25/06/2024	Add new questions followup.apse_flag, followup.is_this_a_clinical_incident (PBI: 538684)	2.2.1
2.0.0	25/06/2024	Remove followup.is_vmia_notifiable question (PBI: 538693)	2.2.1, 2.4.1, 2.6.1, 2.8.1
2.0.0	25/06/2024	Amend Incident Severity Rating (ISR) algorithm for Clinical records base on the following questions: level_of_harm duration_of_harm level_of_treatment (PBI: 538718)	2.2.1
2.0.0	04/07/2024	Amend followup.contributing_factors list. (PBI: 538724)	2.2.1
2.0.0	04/07/2024	Remove followup.related_health_service_standard question for clinical records. (PBI: 538725)	2.2.1
2.0.0	04/07/2024	Remove followup.other_sentinel_event question. sentinel_event question is required for ISR 1 or 2 clinical incident. (PBI: 538726)	2.2.1

<b>Version</b>	<b>Date</b>	<b>Change overview</b>	<b>Affected sections</b>
2.0.0	04/07/2024	Adding a new question affected_patient.indigenous_status for clinical incident. (PBI: 538727)	2.2.1
2.0.0	04/07/2024	Adding a new question organisation.hs_incident_id. (PBI: 552647)	2.2.1, 2.4.1, 2.6.1, 2.8.1

# Authorisations

Where authorisations are provided via email, please attach evidence (screen capture or pdf document) under the **Attachments** section.

Date	Name, Position and Organisation	Signature

# References

References used throughout the document should refer to the **'Id'** shown in the table below. Note that this is a local id and is only relevant for this document.

Id	Version	Release Date	Document Description
1			
2			
3			

# 1 Summary

## 1.1 Overview

### 1.1.1 Purpose

The purpose of this document is to specify the business rules and technical details for the VHIMS – Incident Management System (IMS), Application Programming Interface (API) for external health service providers and third-party vendors. It covers the business logic behind submitting Incident reports and outcomes to the department via the VHIMS IMS - API

### 1.1.2 Scope

This document applies to health service providers that are using their own IMS System for recording and managing incident reports. The health service providers must report the VHIMS2 minimum data set (MDS) through the IMS - API gateway. Please note no other transmission options are available for these health service providers to report the VHIMS MDS.

### 1.1.3 Audience

The audience for this document includes:

- External health service providers
- External IMS software vendors
- DH staff and management
- DH support

### 1.1.4 Terms and Definitions

Terms	Definitions
Mutual TLS Authentication	Mutual Transport Layer Security is an end-to-end security method for mutual authentication ensuring both parties are who they say they are before data is shared.
VHIMS Central Solution	Victorian Health Incident Management System – A web-based Incident Management System implemented on top of the VHIMS2 MDS
VHIMS 2 MDS	Victorian Health Incident Management System 2 Minimum Data Set a defined set of data elements required to be reported from Incident Management Systems to the Department of Health by all public health services, to allow the monitoring of quality and safety of patient, staff and visitors of these health services.

### 1.1.5 Acronyms

Terms	Definitions
DH	Department of Health
DGS	Department of Government Services
eHealth	Division of the Department of Health
HTTP	Hypertext Transfer Protocol

ETB	Enterprise Technology Branch
JSON	JavaScript Object Notation
IMS - API	Incidents Management System / Application Programming Interface
VHIMS	Victorian Health Incident Management System (VHIMS)

### 1.1.6 API Interface Architecture

The following diagram is a high-level overview of the API interface architecture.

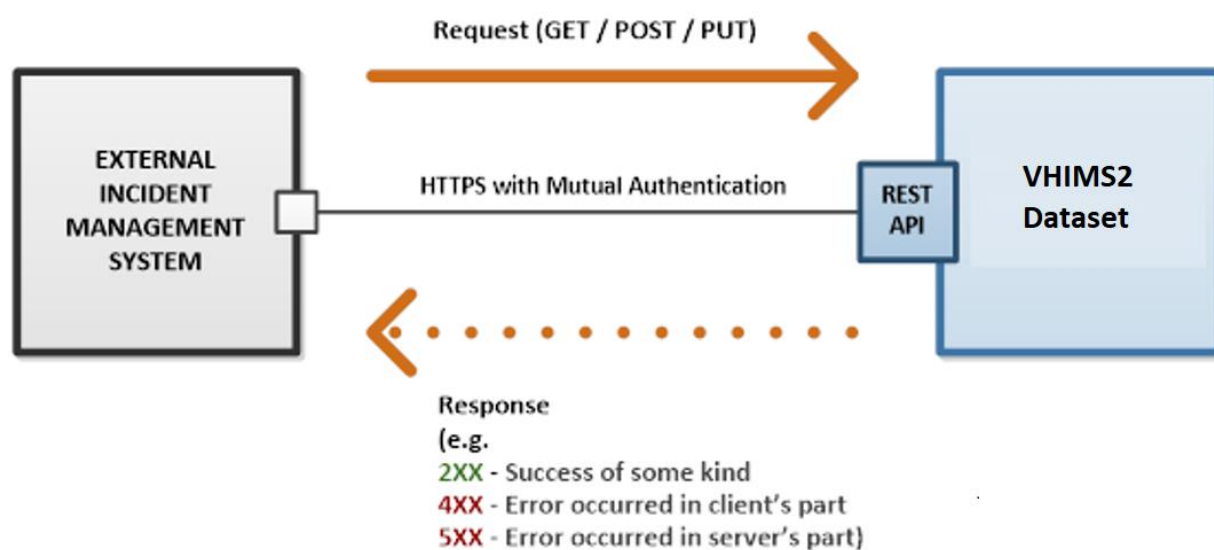


Figure 1 - API interface architecture.

Health service providers that are using external IMS (i.e. not VHIMS Central Application) must use a system capable of transmitting incident information (VHIMS MDS) to the department. Service providers are required to submit incident information (new incidents and also updates to existing incidents) electronically, via the IMS-API daily.

The IMS-API will enable health service providers with appropriate platforms to continue to use their IT systems to record and submit incidents. The health service provider will require a Rest API client on their systems to interface to the VHIMS IMS-API. Note: Microsoft products such as Word/Excel/Access do not constitute an appropriate platform.

### 1.1.7 Interface Details

Architecture/Protocol	RESTful API
Message Format	JSON (JavaScript Object Notation)
Response Status	Standard HTTP Status codes
Transport	HTTPS with Mutual Authentication

The VHIMS IMS-API interface is a RESTful API interface. The interface supports standard HTTP methods (e.g. GET, POST and PUT) for one or more resources. All messages are in JSON format.

Only one response is issued per request. The response will include the standard HTTP status code to indicate success or failure and relevant data and error messages where applicable. (Refer to the validation section of the data entities listed below for examples of the validation messages that may be returned)

The interface will authenticate external applications through Mutual TLS 1.2 Authentication mechanism.

There are two certificates involved, one on DH side and one on the client side. The API endpoints within the same environment will all present the same server certificate, which should be accepted by the clients. Health Service providers, when connecting to our endpoints, will have to present their own client certificate.

If the same vendor is submitting incidents on behalf of multiple health service providers, the vendor must use a different client certificate for each health service provider.

The interface will allow external systems to submit incidents to the VHIMS2 Dataset Storage to support analysis and state-wide reporting.

### 1.1.8 Interface Access and Testing

Swagger is an open-source framework tool that helps design, build, document and consume the RESTful API. The links to 'swagger' for VHIMS IMS-API are on the DGS portal. The Service providers can commence testing the VHIMS IMS-API after registering an account with DGS.

### 1.1.9 API Overview

There are four types of incidents in the VHIMS2 Dataset:

- Clinical Incidents
- OHS (Staff) Incidents
- OHS (Visitor) Incidents
- Hazard Incidents

Each incident type has a slightly different content. There will be two end points for each incident type in the IMS-API: one for creating a new incident (POST operation) and one for updating an existing incident (PUT operation).

An incident report should only be submitted **once** using the 'POST – incident' end point.

On a successful POST the VHIMS2 Dataset incident ID is returned.

If there are any changes to the incident data submitted to the department, the incident report can be resubmitted with changes using the 'PUT – Incident' end point. The VHIMS2 Dataset incident ID must be included for PUT requests as part of the URL.

#### 1.1.9.1 /api-base-uri/v2/reference-data

Protocol	HTTPS
API Version	2.0
Supported Methods	<b>GET</b>
Path Parameters	N/A
Query Parameters	incident_type (i.e.: clinical, ohs-staff, ohs-visitor, hazard) api_release_date (Date identifying the specific API release that is being used) optional: as_of (the date time for which the reference data is required)

Input Body	No Input Body
Response Body	Array of reference data (e.g., campuses, event_types, etc.)
Response Time (90 <sup>th</sup> percentile response time)	less than 4 seconds
Authentication Mechanism	Mutual SSL Authentication
Maximum Request Rate	850 per hour
Known Limitation	N/A

### 1.1.9.2 /api-base-uri/v2/clinicals

Protocol	HTTPS	
API Version	2.0	
Supported Methods	<b>POST</b>	<b>PUT</b>
Path Parameters	N/A	Incident ID
Query Parameters	api_release_date	N/A
Input Body	New Clinical Incident report	Existing Clinical Incident report
Response Body	No Response Body	No Response Body
Response Time (90 <sup>th</sup> percentile response time)	less than 4 seconds	less than 4 seconds
Authentication Mechanism	Mutual SSL Authentication	Mutual SSL Authentication
Maximum Request Rate	850 per hour	850 per hour
Known Limitation	N/A	N/A

### 1.1.9.3 /api-base-uri/v2/ohs-staffs

Protocol	HTTPS	
API Version	2.0	
Supported Methods	<b>POST</b>	<b>PUT</b>
Path Parameters	N/A	Incident ID
Query Parameters	api_release_date	N/A
Input Body	New OHS (Staff) Incident report	Existing OHS (Staff) Incident report
Response Body	No Response Body	No Response Body
Response Time (90 <sup>th</sup> percentile response time)	less than 4 seconds	less than 4 seconds
Authentication Mechanism	Mutual SSL Authentication	Mutual SSL Authentication
Maximum Request Rate	850 per hour	850 per hour
Known Limitation	N/A	N/A

### 1.1.9.4 /api-base-uri/v2/ohs-visitors

Protocol	HTTPS	
API Version	2.0	
Supported Methods	<b>POST</b>	<b>PUT</b>
Path Parameters	N/A	Incident ID
Query Parameters	api_release_date	N/A
Input Body	New OHS (Visitor) Incident report	Existing OHS (Visitor) Incident report

Response Body	No Response Body	No Response Body
Response Time (90 <sup>th</sup> percentile response time)	less than 4 seconds	less than 4 seconds
Authentication Mechanism	Mutual SSL Authentication	Mutual SSL Authentication
Maximum Request Rate	850 per hour	850 per hour
Known Limitation	N/A	N/A

### 1.1.9.5 /api-base-uri/v2/hazards

Protocol	HTTPS	
API Version	2.0	
Supported Methods	<b>POST</b>	<b>PUT</b>
Path Parameters	N/A	Incident ID
Query Parameters	api_release_date	N/A
Input Body	New Hazard Incident report	Existing Hazard Incident report
Response Body	No Response Body	No Response Body
Response Time (90 <sup>th</sup> percentile response time)	less than 4 seconds	less than 4 seconds
Authentication Mechanism	Mutual SSL Authentication	Mutual SSL Authentication
Maximum Request Rate	850 per hour	850 per hour
Known Limitation	N/A	N/A

### 1.1.10 Changes to the VHIMS2 Dataset and/or IMS-API interface

Changes will occur periodically based on business requirements and or policy changes. These changes may impact reference data, entity data fields or business rules. Health service provider should ensure that their Incident Management System is flexible and configurable to accommodate any future changes.

If DH determines that:

- It will make a functional change (such as a change to the VHIMS2 Dataset and/or the IMS-API interface) or change reference data; and
- that change is likely to affect the Health Service providers that use the API interface,

DH will, undertake a formal change process for all changes which includes informing health service providers of the change and any impact resulting from the changes.

DH will detail the type of change.

- Reference data change – this would be changes to values such as Event types, Level of Impact etc.
- Entity data fields required – Additional/removal of data that is required to be captured for an incident report.
- Business rule/System impact – Changes required to the API to cater for internal system changes that impact the way the API functions.

DH will take reasonable steps to resolve any concerns that either party may have about any functional changes proposed. Each party will work cooperatively and in good faith to support the other party with the implementation of a functional change. Any changes will be limited to no less than annual and will follow a formal process including a call for change, release of proposed changes and consultation with all stakeholders including software vendors before implementation.

### 1.1.11 API testing guidelines

As part of the MDS 2024 release, we are introducing the v2 API. We recommend that all health services conduct testing on both v1 and v2 endpoints to ensure compatibility and functionality.

Health services and vendors are encouraged to implement additional testing scenarios tailored to their specific use cases. You may document all test results and issues encountered to facilitate troubleshooting and resolution.

Below are the recommended testing environment and scenarios.

Environment	URL (api_base_uri)
Pre-Production Staging	https://dhhs-api.gateway.prod.api.vic.gov.au/dhhs3/ims-incidents/health-service-incident/

	Test scenario for V1 API endpoints	GUID incident	Pass/Fail /Na
1.1	Create a clinical incident		
1.2	Update a clinical incident		
1.3	Create an OHS-Staff incident		
1.4	Update an OHS Staff incident		
1.3	Create an OHS Visitor incident		
1.4	Update an OHS Visitor incident		
1.3	Create a hazard incident		
1.4	Update a hazard incident		
1.5	Delete an incident (clinical/ohs-staff/ ohs-visitor hazard/)		

	Test scenario for V2 API endpoints	GUID incident	Pass/Fail /Na
1.1	Create a clinical incident		
1.2	Update a clinical incident		
1.3	Create an OHS-Staff incident		
1.4	Update an OHS Staff incident		
1.3	Create an OHS Visitor incident		
1.4	Update an OHS Visitor incident		
1.3	Create a hazard incident		
1.4	Update a hazard incident		
1.5	Delete an incident (clinical/ohs-staff/ ohs-visitor hazard/)		

### 1.1.12 Reference Data

There are two kinds of reference data that are going to be used in the IMS-API:

- Global reference data
- Organisation reference data

Global reference data is the same for all organisations; for example: event types, health service standards, etc. These values are provided to the IMS-API consumers by DH as part of the VHIMS2 Dataset.

Organisation reference data is specific to each organisation; for example: campuses. These values are provided to DH by the IMS-API consumers during the manual offline onboarding process of the organisation.

The full lists of values for both the global and organisation reference data will be exposed as a GET endpoint, so that the Swagger definition will simply need to provide a link to these values and some usage examples.

Global reference data values are expected to change only very rarely. DH will inform organisations when reference data has been updated. If the changes are backward-compatible (e.g. adding a new value to a list) then they would require only a configuration change to the VHIMS2 Dataset and a non-breaking upgrade to the Swagger definition of the IMS-API. If the changes are not backward-compatible (e.g. updating values in a list) then they would likely require a new deployment of the VHIMS2 Dataset and a new version of the API (e.g.: /api-base-uri/v3/). DH will advise all IMS-API consumers of the change and will provide a deadline after which the old endpoints will no longer be available for the creation of new incidents (but will still be available for the update of existing incidents)

Any change to the organisation reference data regarding the Organisation or DH Campus Code (e.g. a new campus required or a merger of organisations,) will have to be communicated by the organisation to VHIMS2 ([vhims2@vahi.vic.gov.au](mailto:vhims2@vahi.vic.gov.au)) as part of the offline onboarding process well in advance of the future effective date of the change.

## 1.2 Swagger Definition

Swagger definition document is on the DGS portal. Please contact VHIMS support representative to create an account with DGS and get access to VHIMS IMS-APIs as well as the Swagger definition.

## 1.3 Connection Details

### 1.3.1 HTTP Details

Environment	URL (api_base_uri)	API version	api_release_date
Pre-Production Staging	https://dhhs-api.gateway.prod.api.vic.gov.au/dhhs3/ims-incidents/health-service-incident/	v1	2024-06-05
		v2	2025-06-13
Pre-Production	https://dhhs-api.gateway.prod.api.vic.gov.au/dhhs2/ims-incidents/health-service-incident/	v1	2021-11-19
		v2	2025-06-13
Production	https://dhhs-api.gateway.prod.api.vic.gov.au/dhhs/ims-incidents/health-service-incident/	v1	2021-08-06
		v2	2025-06-30

## 1.4 Security Requirements

All connections to the VHIMS IMS-API endpoints and swagger documentation URL will be secured with mutual authentication via TLS 1.2. Upon connection and during establishment of the Transport Layer Security (TLS) handshake, DH servers will present its server certificate and will request for a client certificate to be presented by the client. If the client does not present a client certificate, the TLS handshake will not be completed, and connection will fail. If a client certificate is presented, DH servers will establish the TLS connection but will proceed to further validate the client certificate. If validation fails, DH servers will return a response with a status code of unauthorised (403).

It is requested that clients accept the server certificate presented by DH servers as a trusted certificate.

Service Providers will need to provide a client certificate to DH, according to the requirements below. This client certificate needs to be shared only with the certificate's public key. Client certificate requirements are:

- Client certificates will need to be signed by DH's Trusted Certificate Authority.
- Client certificates should be exchanged with DH without their private keys.
- Client certificates cannot be shared across different organisations.

Client certificate's private keys are not to be shared with any parties, including DH. It is the Service Provider's responsibility to ensure that client certificate's private keys are not shared with any parties.

DH will not permit the same client certificate to be shared across non-production environments and production environments.

DH will require one client certificate per Service provider. Service Providers cannot share the same client certificate.

When client certificates expire, new client certificates will need to be issued by the Service provider and provided to DH, without the private keys.

## 2 Interface Details

### 2.1 GET /api-base-uri/v2/reference-data

The GET method will return the reference data in an array format for the given incident type and the given point in time.

#### 2.1.1 Input

##### 2.1.1.1 Header

No input header required.

##### 2.1.1.2 Parameters

Listed here are parameters that the method supports. There are two types of parameters: query parameters and path parameters (aka URI parameters). Path parameters are provided in the URI Path section and are typically defined within the {} brackets. Whereas query parameters are provided after the '?' notation.

Query Parameters are required for this method to work.

Parameter Name	Param Type	Description	Optional / Mandatory	Type	Length	Format / Comments
api_release_date	Query	Date identifying the specific API release that is being used	Mandatory	String	10	Format: "yyyy-MM-dd" (e.g.: 2018-12-31).
incident_type	Query	Type of incident for which the reference data is required.	Mandatory	String	N/A	Must be one of these values: clinical, ohs-staff, ohs-visitor, hazard
as_of	Query	The date time for which the reference data is required, so that the correct values that were effective at that time are retrieved. If not provided, the current date time is assumed.	Optional	String	N/A	dateTime format, As defined by date-time - RFC3339

Examples:

- /health-service-incident/v2/reference-data?api\_release\_date=2023-04-20&incident\_type=ohs-visitor  
will return the reference data valid at time "2023-04-20" for incidents of type "ohs-visitor"

### 2.1.1.3 Body

Body is not required

## 2.1.2 Output

### 2.1.2.1 Header

There are no non-standards output headers that the calling system should be aware of.

### 2.1.2.2 Status Code

Status Code	Description
200	OK

For error status codes, please refer to the Error Response section.

### 2.1.2.3 Body

JSON Name (Output)	Description	Req.	Occurs (1, Many)	Type	Length
reference_data	List of all lists of reference values.	Yes	1	Array	
reference_data/*	Data about the reference values for a single field in the incident payload.	Yes	0..Many	Object	
reference_data/*/ field_name	Name of the field in the incident payload.	Yes	0..Many	String	200
reference_data/*/ reference_data	List of reference values allowed for this field.	Yes	0..Many	Array	
reference_data/*/ reference_data/*	Data about a single reference value.	Yes	0..Many	Object	
reference_data/*/ reference_data/*/ code	Code of the reference value.	Yes	0..Many	String	200
reference_data/*/ reference_data/*/ text	Text description of the reference value.	Yes	0..Many	String	200
reference_data/*/ reference_data/*/ dependent_reference_data	List of fields that have their own reference values dependent of this field. If this field does not have dependent fields, then the array must be empty.	Yes	0..Many	Array	

reference_data/*/ reference_data/*/ dependent_reference_data/*	Data about a single dependent field.	Yes	0..Many	Object	
reference_data/*/ reference_data/*/ dependent_reference_data/*/ field_name	Name of the dependent field.	Yes	0..Many	String	200
reference_data/*/ reference_data/*/ dependent_reference_data/*/ codes	List of allowed reference values for the dependent field.	Yes	0..Many	Array	
reference_data/*/ reference_data/*/ dependent_reference_data/*/ codes/*	Code of the reference value.	Yes	0..Many	String	200

The example below shows a sample of reference data with and without dependencies.

E.g.:

- field "equipment.type" allows 3 possible values ("Bed", "Engineering related" and "Other furniture") and it has no dependencies, i.e. choosing a specific value for "equipment.type" does not change the allowed values for any other field.
- Field "property.type" allows 2 possible values ("Vehicles" and "Other") and it has 2 dependent fields: "property.affected" and "property.problem", for example:
  - When field "property.type" is assigned to value "Vehicles", field "property.affected" will only allow values "Ambulance", "Personal vehicle" and "Truck"

```
{ {
  "reference_data": [{
    "field_name": "equipment.type",
    "reference_data": [{
      "code": "bed",
      "text": "Bed",
      "dependent_reference_data": []
    }, {
      "code": "engineeringrelated",
      "text": "Engineering related",
      "dependent_reference_data": []
    }, {
      "code": "otherfurniture",
      "text": "Other furniture",
      "dependent_reference_data": []
    }
  ]
}
```

```

    ], {
      "field_name": "property.type",
      "reference_data": [{
        "code": "vehicles",
        "text": "Vehicles",
        "dependent_reference_data": [{
          "field_name": "property.affected",
          "codes": [
            "ambulance",
            "personalvehicle",
            "truck"
          ]
        }], {
          "field_name": "property.problem",
          "codes": [
            "damaged",
            "fault/defect",
            "stolen"
          ]
        }
      ]
    }, {
      "code": "other",
      "text": "Other",
      "dependent_reference_data": [{
        "field_name": "property.affected",
        "codes": [
          "other"
        ]
      }], {
        "field_name": "property.problem",
        "codes": [
          "damaged",
          "lost/missing"
        ]
      }
    ]
  }
], {
  "field_name": "property.affected",
  "reference_data": [{
    "code": "ambulance",
    "text": "Ambulance",
    "dependent_reference_data": []
  }], {
    "code": "personalvehicle",
    "text": "Personal vehicle",
    "dependent_reference_data": []
  }], {
    "code": "truck",
    "text": "Truck",
    "dependent_reference_data": []
  }], {
    "code": "other",
    "text": "Other",
    "dependent_reference_data": []
  }
]
}, {

```

```

    "field_name": "property.problem",
    "reference_data": [{
      "code": "damaged",
      "text": "Damaged",
      "dependent_reference_data": []
    }, {
      "code": "fault/defect",
      "text": "Fault/defect",
      "dependent_reference_data": []
    }, {
      "code": "lost/missing",
      "text": "Lost/missing",
      "dependent_reference_data": []
    }, {
      "code": "stolen",
      "text": "Stolen",
      "dependent_reference_data": []
    }
  ]
}

```

## 2.1.3 Error Response

### 2.1.3.1 HTTP Error Status Code

Status Code	Description
400	Bad Request  Application error raised by the API will return additional details in the body payload. Please see the error section for more details.
401	Unauthorized
403	Forbidden
404	Not Found
405	Method not allowed
408	Request timeout
415	Unsupported media type
500	Internal Server Error

### 2.1.3.2 Error Body

In some cases, additional error details are returned in the Response Body

Listed here is the structure:

JSON Name (Error)	Description	Required?	Occurs (1, Many)	Type	Length
----------------------	-------------	-----------	---------------------	------	--------

errors	The parent object	Yes	Many	Object	N/A
id	Identifier of the specific error	No	1	String	
code	An application-specific error code – These are listed in the API Error Code section	Yes	1	String	
detail	A human-readable explanation specific to this occurrence of the problem.	Yes	1	String	
source	An object containing references to the source of the error, optionally including any of the following members:  pointer: a JSON Pointer [RFC6901] to the associated entity in the request document [e.g. "/data" for a primary data object, or "/data/attributes/title" for a specific attribute].  parameter: a string indicating which URI query parameter caused the error	No	1	Object	
source/pointer	JSON Pointer [RFC6901] to the associated entity in the request document [e.g. "/data" for a primary data object, or "/data/attributes/title" for a specific attribute].	No	1	JSON Pointer (string)	
source/parameter	A string indicating which URI query parameter caused the error.	No	1	String	

### 2.1.3.3 API Error Codes

A sample error response:

```
[
  {
    "id": "1106adc5-9dd3-4c61-b89b-8594158f439c",
    "code": "400-101",
    "detail": "Invalid date format (expected \"yyyy-MM-dd\", e.g.:
    \"2018-12-31\")",
    "source": {
      "pointer": "api_release_date"
    }
  }
]
```

## 2.2 POST /health-service-incident/v2/clinicals.

The POST method will create an instance of a Clinical Incident. If successful, a 201 Created code is returned.

### 2.2.1 Input

#### 2.2.1.1 Header

Header	Value
Content-type	application/json

#### 2.2.1.2 Parameters

Listed here are parameters that the method supports. There are two types of parameters: query parameters and path parameters (aka URI parameters). Path parameters are provided in the URI Path section and are typically defined within the {} brackets. Whereas query parameters are provided after the '?' notation.

Query Parameters can be specified for this method.

Parameter Name	Param Type	Description	Optional / Mandatory	Type	Length	Format / Comments
api_release_date	Query	Date identifying the specific API release that is being used	Mandatory	string	10	Format: "yyyy-mm-dd" (e.g.: 2018-12-31)

#### 2.2.1.3 Body

JSON Name (Input)	Description	Required?	Occurs	Type	Length	Format / Comments
			(1,			

			Ma ny)			
headers	The parent header object, containing the incident metadata	Yes	1	obje ct		
headers /request_date_time	Timestamp of when the client made the request	Yes	1	strin g		Format: "yyyy-mm- ddThh:mm :ss:fffZ" (e.g.: 2018-12- 31T13:52: 47.922Z)
headers /incident_grouping_id	Unique identifier to group together related incidents	Yes	1	GUI D		e.g.: 0b4b484c- ef87-4f71- a31b- 1bc8ac45d 369
data	The parent data object, containing the incident payload	Yes	1	obje ct		
data/reporters_role	Worker's role of the staff reporting the incident	Yes	1	strin g	200	Free text
data/ incident_date	Date of when incident occur	Yes	1	strin g	256	Format: "yyyy-mm- dd"
data/ incident_time	Time of when incident occur	Yes	1	strin g	256	Format:"hh :mm tt"
data/ notification_date	Date which the incident has been notified in the agency/health service system	Yes	1	strin g	256	Format: "yyyy-mm- dd"
data/ signoff_close_date	Sign off/close incident date	No	1	strin g	256	Format: "yyyy-mm- dd"
data/ reviews	List of actions of type 'review'.	Yes	0.. Ma ny	Arra y		

data/reviews/*	Data about one action of type 'review'.	Yes	0.. Many	object		
data/reviews/*/id	unique identifier of the action	Yes	0.. Many	GUID		This needs to be a globally unique identifier, so that updates of existing actions can be distinguished from additions of new actions
data/reviews/*/type	Type of review	Yes	0.. Many	string		Reference data
data/reviews/*/status	Status of review	Yes	0.. Many	string		Reference data
data/organisation	Data of organisation	Yes	1	object		Parent Object
data/organisation/dh_campus_code	The Department of Health allocated campus code for the reporting organisation	Yes	1	String		Reference data
data/organisation/ward_type	Ward type is the type of place, ward or other location where the incident occurred	Yes	1	String	256	Reference data
data/organisation/specialty_type	Specialty type is the type of unit/program responsible for the care of the affected person	Yes	1	String	256	Reference data
data/	The incident id created by the	Yes	1	String	200	

organisation/ hs_incident_id	IMS visible in the health service user interface.					
data/ injuries_sustained	Are injuries sustained	Yes, only if data/behaviour/is_seclusion_required contains 'yes'	1	Boolean string		"yes" / "no"
data/ radiation_source	Radiation Source	Yes, only if data/event_types contains '95'	1	string	256	Reference data
data/ organisation_management	Details related to organisation and management	Yes, only if data/event_types contains '100'	1	object		Parent Object
data/ organisation_management/ problem	Problem type	Yes	1	string	256	Reference data
data/ type_of_injury	Type of injuries sustained	Yes, only if data/event_types contains '96'	1	string	256	Reference data
data/ event_types	Type of events that entail the incident	Yes	1	string		Reference data  (List of event code with pipe delimiters)
data/ behaviour	Details related to behaviour	Yes, only if data/event_types contains '81'		object		Parent Object
data/ behaviour/ related_to	Behaviour related to	Yes	1	string	256	Reference data
data/ behaviour/  is_seclusion_required	Was seclusion required?	Yes	1	Boolean string		"yes" / "no"
data/ behaviour/  is_restraint_required	Was restraint required?	Yes	1	Boolean string		"yes" / "no"

data/ behaviour/ behaviour_problems	Type of behaviour that caused the incident	Yes	1	string	256	Reference data Values separate with   delimiter
data/ behaviour/ instigator_role	Role of the person who caused the incident	Yes	1	string	200	Reference data
data/ restrain_type_used	Type of restraint used if any	Yes, only if data/behaviour/is_restraint_required is 'yes'	1	string	256	Reference data
data/ blood_product	Details related to Blood Product	Yes, only if data/event_types contains '82'	1	object		Parent Object
data/ blood_product/ product_type	Type of the product	Yes	1	string	256	Reference data Values separate with   delimiter
data/ blood_product/ problem	Problem type	Yes	1	string	256	Reference data
data/ blood_product/ process	Process	Yes	1	string	256	Reference data
data/ deteriorating_patient	Details related to deteriorating patient	Yes, only if data/event_types contains '85'	1	object		Parent Object
data/ deteriorating_patient/ problem	Problem type	Yes	1	string	256	Reference data
data/ deteriorating_patient/ process	Process	Yes	1	string	256	Reference data
data/ equipment	Details related to equipment	Yes, only if data/event_types contains '99'	1	object		Parent Object

data/ equipment/ type	Type of equipment	Yes	1	string	256	Reference data
data/ equipment/ problem	Problem type	Yes	1	string	256	Reference data
data/ assessment_care_pla n	Details related to assessment and care planning	Yes, only if data/event_types contains '80'	1	object		Parent Object
data/ assessment_care_pla n/ problem	Problem type	Yes	1	string	256	Reference data
data/ assessment_care_pla n/ process	Process	Yes	1	string	256	Reference data
data/ property	Details related to property	Yes, only if data/event_types contains '101'	1	object		Parent Object
data/ property/ type	type of property	Yes	1	string	256	Reference data
data/ property/ affected	affected	Yes	1	string	256	Reference data
data/ property/ problem	problem type	Yes	1	string	256	Reference data
data/ communication_docu mentation	Details related to communication/ documentation	Yes, only if data/event_types contains '83' or '86'	1	object		Parent Object
data/ communication_docu mentation/ problem	Problem type	Yes	1	string	256	Reference data

data/ communication_documentation/ process	Process	Yes	1	string	256	Reference data
data/ consent	Details related to consent	Yes, only if data/event_types contains '84'	1	object		Parent Object
data/ consent/ related_to	Consent related to	Yes	1	string	256	Reference data
data/ consent/ problem	Problem type	Yes	1	string	256	Reference data
data/ handover_transfer	Details related to handover/transfer	Yes, only if data/event_types contains '88'	1	object		Parent Object
data/ handover_transfer/ problem	Problem type	Yes	1	string	256	Reference data
data/ handover_transfer/ process	Process	Yes	1	string	256	Reference data
data/ fall	Details related to patient fall	Yes, only if data/event_types contains '87'	1	object		Parent Object
data/ fall/ activity	Activity at the time of the fall	Yes	1	string	256	Reference data
data/ fall/ is_witnessed	Is the fall witnessed?	Yes	1	Boolean string		"yes" / "no"
data/ fall/ type	Fall type	Yes	1	string	256	Reference data
data/ infection_control	Details related to infection control	Yes, only if data/event_types contains '89'	1	object		Parent Object

data/ infection_control/ detection	When was the infection detected?	Yes	1	string	256	Reference data
data/ infection_control/ infection_type	type of infection	Yes	1	string	256	Reference data
data/ investigation	Details related to investigations	Yes, only if data/event_types contains '90'	1	object		Parent Object
data/ investigation/ related_service	which service was this related to?	Yes	1	string	256	Reference data
data/ investigation/ problem	Problem type	Yes	1	string	256	Reference data
data/ investigation/ process	Process	Yes	1	string	256	Reference data
data/ patient_identification	Details related to patient identification	Yes, only if data/event_types contains '94'	1	object		Parent Object
data/ patient_identification/ problem	Problem type	Yes	1	string	256	Reference data
data/ patient_identification/ process	Process	Yes	1	string	256	Reference data
data/ nutrition	Details related to nutrition	Yes, only if data/event_types contains '93'	1	object		Parent Object
data/ nutrition/ nutrition_involved	Nutrition involved	Yes	1	string	256	Reference data
data/ nutrition/ problem	Problem type	Yes	1	string	256	Reference data

data/ nutrition/ process	Process	Yes	1	string	256	Reference data
data/ medication_ivfluids	List of medication/IV fluids	Yes, only if data/event_types contains '92'	1	object		Parent Object
data/ medication_ivfluids/*	Details related to medication/IV fluids	Yes	1	object		Parent object
data/ medication_ivfluids/*/ problem	Problem type	Yes	1	string	256	Reference data
data/ medication_ivfluids/*/ process	Process	Yes	1	string	256	Reference data
data/ medication_ivfluids/*/ generic_name	Generic name of the medication involved in the incident	Yes	1	string	200	Free text
data/ medication_ivfluids/*/ brand_name	Brand name of the medication involved in the incident	No	1	string	200	Free text
data/ unexpected_outcome/ outcome_type	Unexpected outcome type	Yes	1	string	256	Reference data
data/ unexpected_outcome/ description	Description of the outcome if it is of type 'outcomenotspecified'	Yes	1	string	200	Free text
data/ treatment_procedure	Details of treatment procedure	Yes, only if data/event_types contains '97'	1	object		Parent Object
data/ treatment_procedure/ problem	Problem type	Yes	1	string	256	Reference data
data/ treatment_procedure/ process	Process	Yes	1	string	256	Reference data

process						
data/ maternity_neonatal_c omplications	Details of maternity/neo- natal complications	Yes, only if data/event_types contains '91'	1	obje ct		Parent Object
data/ maternity_neonatal_c omplications/ type	Type of complication	Yes	1	strin g	256	Reference data
data/ maternity_neonatal_c omplications/ problem	Problem type	Yes	1	strin g	256	Reference data
data/ what_happened	Details of the incident	Yes	1	obje ct		Parent Object
data/ what_happened/ summary	Brief summary of the incident	Yes	1	strin g	200	Free text
data/ what_happened/ details	Details of the incident	Yes	1	strin g	5000	Free text
data/ what_happened/ level_of_harm	The level of harm for the person affected by this incident.	Yes	1	strin g	256	Reference data
data/ what_happened/ duration_of_harm	The duration of harm (permanent or temporary) experienced by the affected person as a result of this incident.	Yes when level_of_harm is 52 or 53 (Severe or Moderate)	1	strin g	256	Reference data
data/ what_happened/ care_required	The level of treatment or care required by	Yes when duration_of_harm is 57 (Temporary)	1	strin g	256	Reference data

level_of_treatment	the affected person as a result of this incident.					
data/ what_happened/ emergency_response_type	Type of emergency response		1	int		Reference data
data/ what_happened/ outcome_response_code_grey	The outcome of the code Grey.	Yes, only if data/ what_happened/ emergency_response_type is 3 or 11		string	256	Reference data
data/ followup	Details related to followup	Yes	1	object		Parent object
data/ followup/ contributing_factors	Contributing factors	Yes, only for incidents with ISR 1 or 2	1	string	256	Reference data
data/ followup/ is_open_disclosure	Was open disclosure conducted	Yes	1	string		"yes" / "no" / "not applicable"
data/ followup/ sentinel_event	Type of sentinel event	Yes, only if ISR is set to 1 or 2	1	string	256	Reference data
data/ followup/ is_this_a_clinical_incident	Is this a clinical incident?	Yes	1	Boolean string		"yes" / "no"
data/ followup/ apse_flag	APSE flag	Yes, only if data/followup/ is_this_a_clinical_incident is set to 'Yes'	1	Boolean string		"yes" / "no"
data/security		Yes, if data/event_types contains '102'	1	object		Parent object
data/ security/ was_personal_security_affected	Was personal security affected?	Yes	1	Boolean string		"yes" / "no"

data/ security/ how_personal_security_affected	In what way was personal security affected?	Yes, if data/ security/ was_personal_security_affected contains "yes"	1	string	256	Reference data
data/ security/ was_the_problem_with_security_services	Was the problem with security services?	Yes	1	Boolean string		"yes" / "no"
data/ security/ security_services_contributing_factor	Was access or delivery of security services a contributing factor?	Yes, if data/ security/ was_the_problem_with_security_services contains "yes"	1	string	256	Reference data
data/ pressure_injury_body_parts	Details of body parts injured due to pressure injuries	Yes, if data/type_of_injury is 'pressureinjury'	Many	array		
data/ pressure_injury_body_parts/*/body_part	The injured body part	Yes	1	string	256	Reference data
data/ pressure_injury_body_parts*/other	Describe the injured body part	Yes, if data/pressure_injury_body_part*/body_part is 'other'	1	string	200	Free text
data/ skin_tear_body_parts	Details of body parts injured due to skin tear injuries	Yes, if data/type_of_injury is 'skintear'	Many	array		
data/ skin_tear_body_parts/*/ body_part	The injured body part	Yes	1	string	256	Reference data
data/ skin_tear_body_parts/*/ other	Describe the injured body part	Yes, if data/skin_tear_body_parts*/body_part is 'other'	1	string	200	Free text
data/ wounded_body_parts	Details of body parts injured due to wounds	Yes, if data/type_of_injury is 'wound'	Many	array		

data/ wounded_body_parts/ */ body_part	The injured body part	Yes	1	string	256	Reference data
data/ wounded_body_parts/ */ other	Describe the injured body part	Yes, if data/wounded_body_parts/*/body_part	1	string	200	Free text
data/ affected_patient/			1	object		Parent object
data/ affected_patient/ client_identifier	The patient's unique identifier from the health service Incident Management System	Yes	1	string	200	Free text
data/ affected_patient/ date_of_birth	Patient's date of birth		1	string	256	Format: "yyyy-mm-dd"
data/ affected_patient/ gender	Patient's gender		1	string	256	Reference data
data/ affected_patient/ indigenous_status	Indigenous status of the patient	Yes	1	String	256	Reference data

**Example of payload:**

```
{
  "headers": {
    "request_date_time": "2021-04-22T13:15:15.922Z",
    "incident_grouping_id": "C048AB5E-CA67-4144-A0E0-C8DE17A9C6C3"
  },
  "data": {
    "reporters_role": "Nurse - V2",
    "incident_date": "2021-04-20",
    "incident_time": "12:15 AM",
    "notification_date": "2021-04-22",
    "signoff_close_date": "2021-04-22",
    "organisation": {
      "dh_campus_code": "24",
      "specialty_type": "12",

```

```

    "ward_type": "2",
    "hs_incident_id": "HSID1"
  },
  "event_types": "80|81|82|83|84|85|86|87|88|89|90|91|92|93|94|95|96|97|98|
99|100|101|102",
  "injuries_sustained": "yes",
  "radiation_source": "fluoroscopy",
  "organisation_management": {
    "problem": "amountcharged/cost"
  },
  "type_of_injury": "wound|pressureinjury|skintear",
  "behaviour": {
    "related_to": "mentalhealth",
    "is_seclusion_required": "Yes",
    "is_restraint_required": "yes",
    "behaviour_problems": "aggressionverbal|sexualactivity|sexualassault|se
xualharassment|sexualother",
    "instigator_role": "nurse"
  },
  "restrain_type_used": "environmentalrestraint",
  "blood_product": {
    "product_type": "autologous,granulocytesandother|Other",
    "problem": "outofcoldstorage",
    "process": "storage"
  },
  "deteriorating_patient": {
    "problem": "Advancedstatementofpreferencenotfollowed(MentalHealthAct)",
    "process": "response"
  },
  "equipment": {
    "type": "bed",
    "problem": "damaged"
  },
  "assessment_care_plan": {
    "process": "discharge",
    "problem": "nopathway/careplan"
  },
  "property": {
    "type": "vehicles",
    "affected": "bus/coach",
    "problem": "fault/defect"
  },
  "communication_documentation": {
    "problem": "incomplete",
    "process": "documentation"
  },
  "consent": {
    "related_to": "medicalrecords",
    "problem": "notobtained"
  },
  "handover_transfer": {
    "problem": "notconducted",
    "process": "transfer"
  },
  "fall": {
    "activity": "playing",
    "is_witnessed": "yes",
    "type": "loweredtothefloor"
  },
  "infection_control": {
    "detection": "ondischarge",

```

```

    "infection_type": "wound(nonsurgical)"
  },
  "investigations": {
    "related_service": "pathology",
    "process": "testing/sampling",
    "problem": "expiredsample"
  },
  "patient_identification": {
    "problem": "threeuniqueidentifiersnotpresent",
    "process": "treatment/procedure"
  },
  "nutrition": {
    "nutrition_involved": "generaldiet",
    "problem": "wrongquantity",
    "process": "preparation"
  },
  "medication_ivfluids": [
    {
      "problem": "extradose",
      "process": "administration",
      "generic_name": "TEST",
      "brand_name": "TEST"
    }
  ],
  "unexpected_outcome": {
    "outcome_type": "outcomenotspecified",
    "description": "Far "
  },
  "treatment_procedure": {
    "problem": "wrong/missingsubjectdetails",
    "process": "orders/decisions"
  },
  "maternity_neonatal_complications": {
    "problem": "stillbirth",
    "type": "neonatal"
  },
  "what_happened": {
    "level_of_harm": "53",
    "duration_of_harm": "57",
    "level_of_treatment": "60",
    "summary": "Summary - MDS",
    "details": "detail",
    "emergency_response_type": "3",
    "outcome_response_code_grey": "1"
  },
  "followup": {
    "is_open_disclosure": "yes",
    "is_this_a_clinical_incident": "yes",
    "apse_flag": "yes"
  },
  "security": {
    "was_personal_security_affected": "yes",
    "how_personal_security_affected": "assault",
    "was_the_problem_with_security_services": "yes",
    "security_services_contributing_factor": "doorsbeingleftunlocked"
  },
  "pressure_injury_body_parts": [
    {
      "body_part": "ear"
    },
    {

```

```

    "body_part": "other",
    "other": "Test."
  }
],
"skin_tear_body_parts": [
  {
    "body_part": "eye"
  },
  {
    "body_part": "other",
    "other": "Close to Shoulder"
  }
],
"wounded_body_parts": [
  {
    "body_part": "face"
  },
  {
    "body_part": "other",
    "other": "Close to Shoulder"
  }
],
"affected_patient": {
  "client_identifier": "ClientName",
  "gender": "Male",
  "date_of_birth": "1950-05-05",
  "indigenous_status": "1"
}
}
}

```

## 2.2.2 Output

### 2.2.2.1 Header

Header	Value
Location	URL of the newly created incident, which includes the Incident ID, i.e. the ID of the created incident (to be used in subsequent PUT operations)

### 2.2.2.2 Status Code

Status Code	Description
201	Created

For error status codes, please refer to the Error Response section.

### 2.2.2.3 Body

Body is not required for success status codes.

## 2.2.3 Error Response

### 2.2.3.1 HTTP Error Status Code

Status Code	Description
400	Bad Request Application error raised by the API will return additional details in the body payload. Please see the error section for more details.
401	Unauthorized
403	Forbidden
404	Not Found
405	Method not allowed
408	Request timeout
415	Unsupported media type
500	Internal Server Error

### 2.2.3.2 Error Body

In some cases, additional error details are returned in the Response Body

Listed here is the structure:

JSON Name (Error)	Description	Required?	Occurs (1, Many)	Type	Length
errors	The parent object	Yes	Many	Object	N/A
id	Identifier of the specific error	No	1	String	
code	An application-specific error code – These are listed in the API Error Code section	Yes	1	String	
detail	A human-readable explanation specific to this occurrence of the problem.	Yes	1	String	
source	An object containing references to the source of the error, optionally including any of the following members:  pointer: a JSON Pointer [RFC6901] to the associated entity in the request document [e.g. "/data" for a primary data object, or	No	1	Object	

	"/data/attributes/title" for a specific attribute]. parameter: a string indicating which URI query parameter caused the error				
source/pointer	JSON Pointer [RFC6901] to the associated entity in the request document [e.g. "/data" for a primary data object, or "/data/attributes/title" for a specific attribute].	No	1	JSON Pointer (string)	
source/parameter	A string indicating which URI query parameter caused the error.	No	1	String	

### 2.2.3.3 API Error Codes

A sample error response:

```
[
  {
    "id": "0b4b484c-ef87-4f71-a31b-1bc8ac45d369",
    "code": "400-101",
    "detail": "The value provided is not supported",
    "source": {
      "pointer": "api_release_date"
    }
  }
]
```

## 2.3 PUT /health-service-incident/v2/clinical/{id}

The PUT method will replace / update an instance of a Clinical Incident. If successful, a 204 No Content Status code is returned.

### 2.3.1 Input

#### 2.3.1.1 Header

Header	Value
Content-type	application/json

#### 2.3.1.2 Parameters

Listed here are parameters that the method supports. There are two types of parameters: query parameters and path parameters (aka URI parameters). Path parameters are provided in the URI Path section and are typically defined within the {} brackets. Whereas query parameters are provided after the '?' notation.

Parameter Name	Param Type	Description	Optional / Mandatory	Type	Length	Format / Comments
id	Path	Incident ID – i.e. unique identifier of the incident to be replaced (this is the value returned by the POST method in the Location HTTP Response header)	Yes	string	36	GUID

E.g.: /health-service-incident/v2/clinical/77764642-DBFB-4757-B8B7-E7D91EE6D230

### 2.3.1.3 Body

JSON Name (Input)	Description	Required?	Occurs (1, Many)	Type	Length	Format / Comments
<i>Same as POST endpoint</i>						

## 2.3.2 Output

### 2.3.2.1 Header

There are no non-standards output headers that the calling system should be aware of.

### 2.3.2.2 Status Code

Status Code	Description
204	No Content

For error status codes, please refer to the Error Response section.

### 2.3.2.3 Body

No body is returned.

## 2.3.3 Error Response

### 2.3.3.1 HTTP Error Status Code

Status Code	Description
400	Bad Request  Application error raised by the API will return additional details in the body payload. Please see the error section for more details.

401	Unauthorized
403	Forbidden
404	Not Found
405	Method not allowed
408	Request timeout
415	Unsupported media type
500	Internal Server Error

### 2.3.3.2 Error Body

In some cases, additional error details are returned in the Response Body

Listed here is the structure:

JSON Name (Error)	Description	Required?	Occurs (1, Many)	Type	Length
errors	The parent object	Yes	Many	Object	N/A
id	Identifier of the specific error	No	1	String	
code	An application-specific error code – These are listed in the API Error Code section	Yes	1	String	
detail	A human-readable explanation specific to this occurrence of the problem.	Yes	1	String	
source	An object containing references to the source of the error, optionally including any of the following members:  pointer: a JSON Pointer [RFC6901] to the associated entity in the request document [e.g. "/data" for a primary data object, or "/data/attributes/title" for a specific attribute].  parameter: a string indicating which URI query parameter caused the error	No	1	Object	

source/pointer	JSON Pointer [RFC6901] to the associated entity in the request document [e.g. "/data" for a primary data object, or "/data/attributes/title" for a specific attribute].	No	1	JSON Pointer (string)	
source/parameter	A string indicating which URI query parameter caused the error.	No	1	String	

### 2.3.3.3 API Error Codes

A sample error response:

```
[
  {
    "id": "f7b1456c-5ef0-4c79-aab1-233325f99819",
    "code": "400-100",
    "detail": "Invalid requestThe value '85b9b52c-9a8b-444d-9dd0-bc9d196f1e0h' is not valid.",
    "source": {
      "pointer": "id"
    }
  }
]
```

## 2.4 POST /health-service-incident/v2/ohs-staff.

### 2.4.1 Input

#### 2.4.1.1 Header

Header	Value
Content-type	application/json

#### 2.4.1.2 Parameters

Listed here are parameters that the method supports. There are two types of parameters: query parameters and path parameters (aka URI parameters). Path parameters are provided in the URI Path section and are typically defined within the {} brackets. Whereas query parameters are provided after the '?' notation.

Query Parameters can be specified for this method.

Parameter Name	Param Type	Description	Optional / Mandatory	Type	Length	Format / Comments
----------------	------------	-------------	----------------------	------	--------	-------------------

api_release_date	Query	Date identifying the specific API release that is being used	Mandatory	string	10	Format: “yyyy-mm-dd” (e.g.: 2018-12-31)
------------------	-------	--	-----------	--------	----	---

### 2.4.1.3 Body

JSON Name (Input)	Description	Required?	Occurs (1, Many)	Type	Length	Format / Comments
headers	The parent header object, containing the incident metadata	Yes	1	object		
headers/request_date_time	Timestamp of when the client made the request	Yes	1	string		Format: “yyyy-mm-ddThh:mm:ss:fffZ” (e.g.: 2018-12-31T13:52:47.922Z)
headers/incident_grouping_id	Unique identifier to group together related incidents	Yes	1	GUID		e.g.: 0b4b484c-ef87-4f71-a31b-1bc8ac45d369
data	The parent object	Yes	1	object		
data/reporters_role	Worker's role of the staff reporting the incident	Yes	1	string	200	
data/is_reporter_the_affected_staff_member	Is the reporter of the incident the same person as the staff affected by the incident?	Yes	1	Boolean string		“yes” / “no”
data/affected_staff_members_role	Worker's role of the staff affected by the incident (when not the same as the reporter)	Yes, if data/is_reporter_the_affected_staff_member contains “no”	1	string	200	

data/ incident_date	Date of when incident occur	Yes	1	string	256	Format: "yyyy-mm-dd"
data/ incident_time	Time of when incident occur	Yes	1	string	256	Format: "hh:mm tt"
data/ notification_date	Date which the incident has been notified in the agency/health service system	Yes	1	string	256	Format: "yyyy-mm-dd"
data/ signoff_close_date	Sign off/close incident date	No	1	string	256	Format: "yyyy-mm-dd"
data/ is_worksafe_notifiable	Can WorkSafe be notified?	Yes	1	Boolean string		"yes" / "no"
data/ organisation	Data of organisation	Yes	1	Object		Parent Object
data/ organisation/ dh_campus_code	The Department of Health allocated campus code	Yes	1	String	256	Reference data
data/ organisation/ ward_type	Ward type is the type of place, ward or other location where the incident occurred	Yes	1	String	256	Reference data
data/ organisation/ specialty_type	Specialty type is the type of unit/program responsible for the care of the affected person	Yes	1	String	256	Reference data
data/ organisation/ hs_incident_id	Hs Incident ID where the Incident occurred hs_incident_id	Yes	1	String	256	
data/ organisation/ where_incident_occur	Indicate whether incident occurred on the way to work, at work ect	Yes	1	string	256	Reference data
data/ what_happened	Details of the incident	Yes	1	Object		Parent Object

data/ what_happened/ summary	Describe the brief summary of the incident	Yes	1	string	200	Free text
data/ what_happened/ details	Details of the incident	Yes	1	string	5000	Free text
data/ what_happened/ type_of_injury	List of injuries	Yes, only if data/what_happened/level_of_harm contains 'harm' or 'death'	1	string	256	Reference data
data/ what_happened/ level_of_harm	The level of harm when the person is being affected.	Yes	1	string	256	Reference data
data/ what_happened/ level_of_care	The level of care required for the person is being affected	Yes	1	string	256	Reference data
data/ what_happened/ action_required	Actions required when level_of_harm and level_of_care are declared as "Harm" and "Medical Treatment".	Yes	1	string	256	Reference data
data/ what_happened/ emergency_response_type	Type of emergency response	Yes	1	int		Reference data
data/ what_happened/ outcome_response_code_grey	The outcome of the code Grey.	Yes, only if data/what_happened/emergency_response_type is 3 or 11	256	string		Reference data
data/ event_types	Type of events that entail the incident	Yes	Many	list		Reference data  (List of event code)

						with pipe delimiters)
data/ injured_body_part	List of body parts	Yes, only if data/what_happened/type_of_injury contains one of these values: Abrasion/Cut/Laceration/Puncture Allergy/Infection Bruise/Contusion Burn/Scald Dislocation/Fracture/Crushing Loss of Consciousness (LOC)/Concussion/Fainting Skin Disorder Sprains/Strains Toxic effects/Poisoning Redness/Swelling	Many	Array		
data/ injured_body_part/*		Yes	1	Object		Parent object
data/ injured_body_part/*/ body_part	Described the injured body part	Yes	1	string	256	Reference data
data/ injured_body_part/*/ other	Specify other body part being injured	Yes, only if data/injured_body_part/*/body_part contains 'other'	1	string	200	Free text entry
data/ behaviour		Yes, if data/event_types contains '104'	1	Object		Parent object
data/ behaviour/ behaviour_problems	The type of behaviour of staff that cause the incident.	Yes	Many	string	256	Text code with pipe delimiters.
data/ behaviour/ instigator_role	The role of the person who caused the incident recorded in the behaviour question.	Yes	1	string	200	Reference data

data/ equipment/	Details of equipment that cause the incident	Yes, if data/event_types contains '106'	1	Object		Parent object
data/ equipment/ problem	Problem of the equipment that cause the incident	Yes	1	string	256	Reference data
data/ equipment/ type	Type of equipment involved in the incident	Yes	1	string	256	Reference data
data/ exposure		Yes, if data/event_types contains '107'	1	Object		Parent object
data/ exposure/ activity	Activity/event/condition that cause of exposure	Yes	1	string	256	Reference data Eg. inhalation
data/ exposure/ type	Type of exposure	Yes	1	string	256	Reference data Eg. Biological Chemical
data/ exposure/ sub_type	Sub-type depend on the exposure type	Yes	1	string	256	Reference data
data/ manual_handling		Yes, if data/event_types contains '109'	1	Object		Parent object
data/ manual_handling/ category	Categorise type of manual/physical handling objects/people	Yes	1	string	256	Reference data
data/ manual_handling/ type	Detail the type of manual handling	Yes	Many	string	256	Reference data Text code with pipe delimiters Eg. "bending lifting/

						carrying/holding”
data/property	Details of property involved in the incident	Yes, if data/event_types contains ‘106’	1	Object		Parent object
data/property/type	General type of the affected property	Yes	1	string	256	Reference data
data/property/affected	Specific type of the affected property	Yes	1	string	256	Reference data
data/property/problem	Problem of the property that cause the incident	Yes	1	string	256	Reference data
data/struck_by_against		Yes, if data/event_types contains ‘114’	1	Object		Parent object
data/struck_by_against/problem	describe the event where person is being hit by object (vehicles,animal)	Yes	1	string	256	Reference data
data/struck_by_against/process	Describe how the visitor being struck by an object, eg. Hit by or being hit.	Yes	1	string	256	Reference data
data/slip_trip_fall		Yes, if data/event_types contains ‘108’	1	Object		Parent object
data/slip_trip_fall/type	Describe the type of falling involved in the incident.	Yes	1	string	256	Reference data
data/reviews	List of actions of type ‘review’.	Yes	0..Many	Array		
data/reviews/*	Data about one action of type ‘review’.	Yes	0..Many	Object		
data/reviews/*/id	unique identifier of the action	Yes	0..Many	GUID		This needs to be a globally unique

						identifier, so that updates of existing actions can be distinguished from additions of new actions
data/reviews/*/type	Type of review	Yes	0.. Many	string		Reference data
data/reviews/*/status	Status of review	Yes	0.. Many	string		Reference data
data/preventative_corrective_actions	List of actions of type 'preventative/correction action'.	Yes	0.. Many	Array		
data/preventative_corrective_actions/*	Data about one action of type 'preventative/correction action'.	Yes	0.. Many	Object		
data/preventative_corrective_actions/*/id	unique identifier of the action	Yes	0.. Many	GUID		This needs to be a globally unique identifier, so that updates of existing actions can be distinguished from additions of new actions
data/preventative_corrective_actions/*/type	Type of preventative/correction action	Yes	0.. Many	string		Reference data

data/ preventative_corrective_actions/*/status	Status of preventative/correction action	Yes	0.. Many	string		Reference data
data/ preventative_corrective_actions/*/completion_date	Completion date of preventative/correction action	Yes	0.. Many	Date		Required only if status = 11 (i.e. Implemented) Format: "yyyy-MM-dd" (e.g.: 2018-12-31)
data/ preventative_corrective_actions/*/why_not_achievable	Text explaining why the preventative/correction action was not achievable.	Yes	0.. Many	String	5000	Required only if status = 12 (i.e. Not achievable)
data/security		Yes, if data/event_types contains '112'	1	Object		Parent object
data/ security/ was_personal_security_affected	Was personal security affected?	Yes	1	Boolean string		"yes" / "no"
data/ security/ how_personal_security_affected	In what way was personal security affected?	Yes, if data/security/was_personal_security_affected contains "yes"	1	string	256	Reference data
data/ security/ was_the_problem_with_security_services	Was the problem with security services?	Yes	1	Boolean string		"yes" / "no"
data/ security/ security_services_contributing_factor	Was access or delivery of security services a contributing factor?	Yes, if data/security/was_the_problem_with_security_services contains "yes"	1	string	256	Reference data

(1) : Reference data can be retrieved from /health-service-incident/v2/reference-data end point.

**Example of payload:**

```
{
  "headers": {
    "request_date_time": "2023-05-08T16:09:01.0000000",
    "incident_grouping_id": "9235D901-4E95-4897-BBE2-78EEF8802972"
  },
  "data": {
    "reporters_role": "Nurse-OSHStaff-V2",
    "is_reporter_the_affected_staff_member": "no",
    "affected_staff_members_role": "Employee",
    "incident_date": "2023-05-08",
    "incident_time": "05:29 AM",
    "notification_date": "2023-05-08",
    "signoff_close_date": "2023-05-08",
    "is_worksafe_notifiable": "yes",
    "organisation": {
      "where_incident_occur": "attheworkplace",
      "dh_campus_code": "24",
      "specialty_type": "12",
      "ward_type": "2",
      "hs_incident_id": "HSID1"
    },
    "what_happened": {
      "level_of_harm": "17",
      "level_of_care": "19",
      "action_required": "",
      "summary": "Not applicable",
      "details": "Not applicable",
      "emergency_response_type": "3",
      "outcome_response_code_grey": "2",
      "type_of_injury": "bruise/contusion|burn/scald|skindisorder"
    }
  }
}
```

```

"event_types": "104|106|107|109|111|112|114|108",
"injured_body_part": [
  {
    "body_part": "mouth/lips",
    "location": "left"
  },
  {
    "body_part": "chin",
    "location": "back"
  }
],
"behaviour": {
  "instigator_role": "unknown",
  "behaviour_problems": "sexualactivity"
},
"equipment": {
  "type": "bed",
  "problem": "contraindicated"
},
"exposure": {
  "activity": "skin/bodycontact",
  "type": "biological",
  "sub_type": "animals"
},
"manual_handling": {
  "category": "patient/client/resident",
  "type": "awkwardposture"
},
"property": {
  "type": "personalbelongings",
  "affected": "glasses",
  "problem": "lost/missing"
},
"struck_by_against": {
  "problem": "fallingobject",

```

```

    "process": "hitbyobject"
  },
  "slip_trip_fall": {
    "type": "fallfromheight(excludingstairs)"
  },
  "reviews": [
    {
      "id": "{{ $guid }}",
      "type": "linemanagerreview",
      "status": "8"
    }
  ],
  "preventative_corrective_actions": [
    {
      "id": "{{ $guid }}",
      "type": "providetraining",
      "status": "11",
      "completion_date": "2024-04-04",
      "why_not_achievable": ""
    },
    {
      "id": "{{ $guid }}",
      "type": "improvehousekeeping",
      "status": "12",
      "completion_date": "",
      "why_not_achievable": "status is 12- not achievable"
    }
  ],
  "security": {
    "was_personal_security_affected": "yes",
    "how_personal_security_affected": "attemptedassault",
    "was_the_problem_with_security_services": "yes",
    "security_services_contributing_factor": "doorsbeingleftunlocked"
  }
}

```

```
}
```

## 2.4.2 Output

### 2.4.2.1 Header

Header	Value
Location	URL of the newly created incident, which includes the Incident ID, i.e. the ID of the created incident (to be used in subsequent PUT operations)

### 2.4.2.2 Status Code

Status Code	Description
201	Created

For error status codes, please refer to the Error Response section.

### 2.4.2.3 Body

Body is not required for success status codes.

## 2.4.3 Error Response

### 2.4.3.1 HTTP Error Status Code

Status Code	Description
400	Bad Request Application error raised by the API will return additional details in the body payload. Please see the error section for more details.
401	Unauthorized
403	Forbidden
404	Not Found
405	Method not allowed
408	Request timeout
415	Unsupported media type
500	Internal Server Error

### 2.4.3.2 Error Body

In some cases, additional error details are returned in the Response Body

Listed here is the structure:

JSON Name (Error)	Description	Required?	Occurs (1, Many)	Type	Length
errors	The parent object	Yes	Many	Object	N/A

id	Identifier of the specific error	No	1	String	
code	An application-specific error code – These are listed in the API Error Code section	Yes	1	String	
detail	A human-readable explanation specific to this occurrence of the problem.	Yes	1	String	
source	An object containing references to the source of the error, optionally including any of the following members:  pointer: a JSON Pointer [RFC6901] to the associated entity in the request document [e.g. "/data" for a primary data object, or "/data/attributes/title" for a specific attribute].  parameter: a string indicating which URI query parameter caused the error	No	1	Object	
source/pointer	JSON Pointer [RFC6901] to the associated entity in the request document [e.g. "/data" for a primary data object, or "/data/attributes/title" for a specific attribute].	No	1	JSON Pointer (string)	
source/parameter	A string indicating which URI query parameter caused the error.	No	1	String	

### 2.4.3.3 API Error Codes

A sample error response:

```
[
  {
    "id": "0b4b484c-ef87-4f71-a31b-1bc8ac45d369",
    "code": "400-101",
    "detail": "The value provided is not supported",
    "source": {
      "pointer": "api_release_date"
    }
  }
]
```

## 2.5 PUT /health-service-incident/v2/ohs-staffs/{id}

The PUT method will replace / update an instance of an OHS Staff incident. If successful, a 204 No Content Status code is returned.

### 2.5.1 Input

#### 2.5.1.1 Header

Header	Value
Content-type	application/json

#### 2.5.1.2 Parameters

Listed here are parameters that the method supports. There are two types of parameters: query parameters and path parameters (aka URI parameters). Path parameters are provided in the URI Path section and are typically defined within the {} brackets. Whereas query parameters are provided after the '?' notation.

Parameter Name	Param Type	Description	Optional / Mandatory	Type	Length	Format / Comments
id	Path	Incident ID – i.e. unique identifier of the incident to be replaced (this is the value returned by the POST method in the Location HTTP Response header)	Yes	string	36	GUID

E.g.: /health-service-incident/v2/ohs-staffs/77764642-DBFB-4757-B8B7-E7D91EE6D230

### 2.5.1.3 Body

JSON Name (Input)	Description	Required?	Occurs (1, Many)	Type	Length	Format / Comments
<i>Same as POST endpoint</i>						

## 2.5.2 Output

### 2.5.2.1 Header

There are no non-standards output headers that the calling system should be aware of.

### 2.5.2.2 Status Code

Status Code	Description
204	No Content

For error status codes, please refer to the Error Response section.

### 2.5.2.3 Body

No body is returned.

## 2.5.3 Error Response

### 2.5.3.1 HTTP Error Status Code

Status Code	Description
400	Bad Request  Application error raised by the API will return additional details in the body payload. Please see the error section for more details.
401	Unauthorized
403	Forbidden
404	Not Found
405	Method not allowed
408	Request timeout
415	Unsupported media type
500	Internal Server Error

### 2.5.3.2 Error Body

In some cases, additional error details are returned in the Response Body

Listed here is the structure:

JSON Name (Error)	Description	Required?	Occurs (1, Many)	Type	Length
errors	The parent object	Yes	Many	Object	N/A
Id	Identifier of the specific error	No	1	String	
code	An application-specific error code – These are listed in the API Error Code section	Yes	1	String	
detail	A human-readable explanation specific to this occurrence of the problem.	Yes	1	String	
source	An object containing references to the source of the error, optionally including any of the following members:  pointer: a JSON Pointer [RFC6901] to the associated entity in the request document [e.g. "/data" for a primary data object, or "/data/attributes/title" for a specific attribute].  parameter: a string indicating which URI query parameter caused the error	No	1	Object	
source/pointer	JSON Pointer [RFC6901] to the associated entity in the request document [e.g. "/data" for a primary data object, or "/data/attributes/title" for a specific attribute].	No	1	JSON Pointer (string)	
source/parameter	A string indicating which URI query	No	1	String	

	parameter caused the error.				
--	-----------------------------	--	--	--	--

### 2.5.3.3 API Error Codes

A sample error response:

```
[
  {
    "id": "f7b1456c-5ef0-4c79-aab1-233325f99819",
    "code": "400-100",
    "detail": "Invalid requestThe value '85b9b52c-9a8b-444d-9dd0-bc9d196f1e0h' is not valid.",
    "source": {
      "pointer": "id"
    }
  }
]
```

## 2.6 POST /health-service-incident/v2/ohs-visitors.

### 2.6.1 Input

#### 2.6.1.1 Header

Header	Value
Content-type	application/json

#### 2.6.1.2 Parameters

Listed here are parameters that the method supports. There are two types of parameters: query parameters and path parameters (aka URI parameters). Path parameters are provided in the URI Path section and are typically defined within the {} brackets. Whereas query parameters are provided after the '?' notation.

Query Parameters can be specified for this method.

Parameter Name	Param Type	Description	Optional / Mandatory	Type	Length	Format / Comments
api_release_date	Query	Date identifying the specific API release that is being used	Mandatory	string	10	Format: "yyyy-mm-dd" (e.g.: 2018-12-31)

#### 2.6.1.3 Body

JSON Name (Input)	Description	Required?	Occurs (1,	Type	Length	Format / Comments
-------------------	-------------	-----------	------------	------	--------	-------------------

			Man y)			
headers	The parent header object, containing the incident metadata	Yes	1	obj ect		
headers /request_date_time	Timestamp of when the client made the request	Yes	1	stri ng		Format: "yyyy-mm- ddThh:mm: ss:fffZ" (e.g.: 2018- 12- 31T13:52:4 7.922Z)
headers /incident_grouping_id	Unique identifier to group together related incidents	Yes	1	GU ID		e.g.: 0b4b484c- ef87-4f71- a31b- 1bc8ac45d 369
data	The parent object	Yes	1	obj ect		
data/reporters_role	Worker's role of the staff reporting the incident	Yes	1	stri ng	200	
data/ incident_date	Date of when incident occur	Yes	1	stri ng	256	Format: "yyyy-mm- dd"
data/ incident_time	Time of when incident occur	Yes	1	stri ng	256	Format:"hh: mm tt"
data/ notification_date	Date which the incident has been notified in the agency/health service system	Yes	1	stri ng	256	Format: "yyyy-mm- dd"
data/ signoff_close_date	Sign off/close incident date	No	1	stri ng	256	Format: "yyyy-mm- dd"
data/ organisation	Data of organisation	Yes	1	Obj ect		Parent Object
data/ The Department of Health	The Department of Health	Yes	1	Stri ng	256	Reference data

organisation/ dh_campus_code	allocated campus code					
data/ organisation/ ward_type	Ward type is the type of place, ward or other location where the incident occurred	Yes	1	String	256	Reference data
data/ organisation/ specialty_type	Specialty type is the type of unit/program responsible for the care of the affected person	Yes	1	String	256	Reference data
data/ organisation/ hs_incident_id	Hs Incident ID where the Incident occurred hs_incident_id	Yes	1	String	256	
data/ what_happened	Details of the incident	Yes	1	Object		Parent Object
data/ what_happened/ summary	Describe the brief summary of the incident	Yes	1	string	200	Free text
data/ what_happened/ details	Details of the incident	Yes	1	string	5000	Free text
data/ what_happened/ type_of_injury	List of injuries	Yes, only if data/what_happened/ level_of_harm contains 'harm' or 'death'	1	string	256	Reference data
data/ what_happened/ level_of_harm	The level of harm when the person is being affected	Yes	1	string	256	Reference data

data/ what_happened/ level_of_care	The level of care required for the person is being affected	Yes	1	string	256	Reference data
data/ what_happened/ emergency_response_type	Type of emergency response	Yes	1	string	256	Reference data
data/ what_happened/ outcome_response_code_grey	The outcome of the code Grey.	Yes, only if data/ what_happened/ emergency_response_type is 3 or 11	1	string	256	Reference data
data/ event_types	Type of events that entail the incident	Yes	Many	list		Reference data  (List of event code with pipe delimiters)
data/ injured_body_part	List of body parts	Yes	1	Array		
data/ injured_body_part/*	Data about a body part	Yes	1	Object		Parent object
data/ injured_body_part/*/ body_part	Described the injured body part for when incident's "Level of harm sustained" is Harm or Death	Yes	1	string	256	Reference data
data/ injured_body_part/*/ other	Specify other body part being injured when body_part is specified as "other".	Yes	1	string	200	Free text entry
data/ behaviour		Yes, if data/event_types contains '118'	1	Object		Parent object

data/ behaviour/ behaviour_problems	The type of behaviour of visitor that cause the incident.	Yes	Many	string	256	Text code with pipe delimiters.
data/ behaviour/ instigator_role	The role of the person who caused the incident recorded in the behaviour question.	Yes	1	string	200	Reference data
data/ equipment	Details of equipment that cause the incident	Yes, if data/event_types contains '117'	1	Object		Parent object
data/ equipment/ problem	Problem of the equipment that cause the incident	Yes	1	string	256	Reference data
data/ equipment/ type	Type of equipment involved in the incident	Yes	1	string	256	Reference data
data/ exposure		Yes, if data/event_types contains '120'	1	Object		Parent object
data/ exposure/ activity	Activity/event/condition that cause of exposure	Yes	1	string	256	Reference data Eg. inhalation
data/ exposure/ type	Type of exposure	Yes	1	string	256	Reference data Eg. Biological Chemical
data/ exposure/ sub_type	Sub-type depends on the exposure type	Yes	1	string	256	Reference data
data/ manual_handling		Yes, if data/event_types contains '123'	1	Object		Parent object

data/ manual_handling/ category	Categorise type of manual/physical handling objects/people	Yes	1	string	256	Reference data
data/ manual_handling/ type	Detail the type of manual handling	Yes	Many	string	256	Reference data Text code with pipe delimiters Eg. "bending  lifting/ carrying/holding"
data/ property	Details of property involved in the incident	Yes, if data/event_types contains '125'	1	Object		Parent object
data/ property/ type	General type of the affected property	Yes	1	string	256	Reference data
data/ property/ affected	Specific type of the affected property	Yes	1	string	256	Reference data
data/ property/ problem	Problem of the property that cause the incident	Yes	1	string	256	Reference data
data/ struck_by_against		Yes, if data/event_types contains '128'	1	Object		Parent object
data/ struck_by_against/ problem	describe the event where person is being hit by object (vehicles,animal)	Yes	1	string	256	Reference data
data/ struck_by_against/ process	Describe how the visitor being struck by an object, eg. Hit by or being hit.	Yes	1	string	256	Reference data

data/ slip_trip_fall		Yes, if data/event_types contains '121'	1	Object		Parent object
data/ slip_trip_fall/ type	Describe the type of falling involved in the incident.	Yes	1	string	256	Reference data
data/ reviews	List of actions of type 'review'.	Yes	0..Many	Array		
data/ reviews/*	Data about one action of type 'review'.	Yes	0..Many	Object		
data/ reviews*/ id	unique identifier of the action	Yes	0..Many	GUID		This needs to be a globally unique identifier, so that updates of existing actions can be distinguished from additions of new actions
data/ reviews*/ type	Type of review	Yes	0..Many	string		Reference data
data/ reviews*/ status	Status of review	Yes	0..Many	string		Reference data
data/ preventative_corrective_actions	List of actions of type 'preventative/correction action'.	Yes	0..Many	Array		
data/ preventative_corrective_actions/*	Data about one action of type 'preventative/correction action'.	Yes	0..Many	Object		
data/ preventative_corrective_actions*/ id	unique identifier of the action	Yes	0..Many	GUID		This needs to be a globally

						unique identifier, so that updates of existing actions can be distinguished from additions of new actions
data/preventative_corrective_actions/*/type	Type of preventative/correction action	Yes	0..Many	string		Reference data
data/preventative_corrective_actions/*/status	Status of preventative/correction action	Yes	0..Many	string		Reference data
data/preventative_corrective_actions/*/completion_date	Completion date of preventative/correction action	Yes	0..Many	Date		Required only if status = 11 (i.e. Implemented) Format: "yyyy-MM-dd" (e.g.: 2018-12-31)
data/preventative_corrective_actions/*/why_not_achievable	Text explaining why the preventative/correction action was not achievable.	Yes	0..Many	String	5000	Required only if status = 12 (i.e. Not achievable)
data/security		Yes, if data/event_types contains '126'	1	Object		Parent object
data/security/was_personal_security_affected	Was personal security affected?	Yes	1	Boolean string		"yes" / "no"

data/ security/ how_personal_security_affected	In what way was personal security affected?	Yes, if data/ security/ was_personal_security_affected contains "yes"	1	string	256	Reference data
data/ security/ was_the_problem_with_security_services	Was the problem with security services?	Yes	1	Boolean string		"yes" / "no"
data/ security/ security_services_contributing_factor	Was access or delivery of security services a contributing factor?	Yes, if data/ security/ was_the_problem_with_security_services contains "yes"	1	string	256	Reference data

- Reference data can be retrieved from /health-service-incident/v2/reference-data end point.

**Example of payload:**

```
{
  "headers": {
    "request_date_time": "2019-02-07T05:39:22.749Z",
    "incident_grouping_id": "{{ $guid }}"
  },
  "data": {
    "reporters_role": "Nurse - V2",
    "incident_date": "2019-02-25",
    "incident_time": "11:11 AM",
    "notification_date": "2019-02-25",
    "signoff_close_date": "2019-02-25",
    "organisation": {
      "dh_campus_code": "24",
      "specialty_type": "12",
      "ward_type": "2",
      "hs_incident_id": "HSID1"
    }
  }
}
```

```

},
"what_happened": {
  "summary": "summary of what happened",
  "details": "details of incident ",
  "type_of_injury": "bruise/contusion|burn/scald|skindisorder",
  "level_of_harm": "43",
  "level_of_care": "45",
  "emergency_response_type": "3",
  "outcome_response_code_grey": "2"
},
"event_types": "117|118|120|121|123|125|128|126",
"injured_body_part": [
  {
    "body_part": "mouth/lips",
    "location": "left"
  },
  {
    "body_part": "chin",
    "location": "back"
  }
],
"behaviour": {
  "behaviour_problems": "aggressionverbal|aggressionphysical|sexualactivity",
  "instigator_role": "resident"
},
"equipment": {
  "type": "medicaldevice/equipment",
  "problem": "inappropriate/unsafestorage"
},
"exposure": {
  "activity": "inhalation",
  "type": "biological",
  "sub_type": "animals"
},
"manual_handling": {

```

```

    "category": "patient/client/resident",
    "type": "bending|lifting/carrying/holding"
  },
  "property": {
    "type": "vehicles",
    "affected": "ambulance",
    "problem": "damaged"
  },
  "struck_by_against": {
    "problem": "vehicleincident",
    "process": "ihitobject"
  },
  "slip_trip_fall": {
    "type": "fallfromsamelevel"
  },
  "reviews": [
    {
      "id": "{{ $guid }}",
      "type": "indepthcasereview",
      "status": "7"
    }
  ],
  "preventative_corrective_actions": [
    {
      "id": "{{ $guid }}",
      "type": "providetraining",
      "status": "11",
      "completion_date": "2020-01-01",
      "why_not_achievable": ""
    }
  ],
  "security": {
    "was_personal_security_affected": "yes",
    "how_personal_security_affected": "abduction/attempted",
    "was_the_problem_with_security_services": "yes",

```

```

    "security_services_contributing_factor": "delayedresponse/attendance"
  }
}
}

```

## 2.6.2 Output

### 2.6.2.1 Header

Header	Value
Location	URL of the newly created incident, which includes the Incident ID, i.e. the ID of the created incident (to be used in subsequent PUT operations)

### 2.6.2.2 Status Code

Status Code	Description
201	Created

For error status codes, please refer to the Error Response section.

### 2.6.2.3 Body

Body is not required for success status codes.

## 2.6.3 Error Response

### 2.6.3.1 HTTP Error Status Code

Status Code	Description
400	Bad Request  Application error raised by the API will return additional details in the body payload. Please see the error section for more details.
401	Unauthorized
403	Forbidden
404	Not Found
405	Method not allowed
408	Request timeout
415	Unsupported media type
500	Internal Server Error

### 2.6.3.2 Error Body

In some cases, additional error details are returned in the Response Body

Listed here is the structure:

JSON Name (Error)	Description	Required?	Occurs (1, Many)	Type	Length
errors	The parent object	Yes	Many	Object	N/A
id	Identifier of the specific error	No	1	String	
code	An application-specific error code – These are listed in the API Error Code section	Yes	1	String	
detail	A human-readable explanation specific to this occurrence of the problem.	Yes	1	String	
source	An object containing references to the source of the error, optionally including any of the following members:  pointer: a JSON Pointer [RFC6901] to the associated entity in the request document [e.g. "/data" for a primary data object, or "/data/attributes/title" for a specific attribute].  parameter: a string indicating which URI query parameter caused the error	No	1	Object	
source/pointer	JSON Pointer [RFC6901] to the associated entity in the request document [e.g. "/data" for a primary data object, or "/data/attributes/title" for a specific attribute].	No	1	JSON Pointer (string)	
source/parameter	A string indicating which URI query	No	1	String	

	parameter caused the error.				
--	-----------------------------	--	--	--	--

### 2.6.3.3 API Error Codes

A sample error response:

```
[
  {
    "id": "0b4b484c-ef87-4f71-a31b-1bc8ac45d369",
    "code": "400-101",
    "detail": "The value provided is not supported",
    "source": {
      "pointer": "api_release_date"
    }
  }
]
```

## 2.7 PUT /health-service-incident/v2/ohs-visitors/{id}

### 2.7.1 Input

#### 2.7.1.1 Header

Header	Value
Content-type	application/json

#### 2.7.1.2 Parameters

Listed here are parameters that the method supports. There are two types of parameters: query parameters and path parameters (aka URI parameters). Path parameters are provided in the URI Path section and are typically defined within the {} brackets. Whereas query parameters are provided after the '?' notation.

Parameter Name	Param Type	Description	Optional / Mandatory	Type	Length	Format / Comments
id	Path	Incident ID – i.e. unique identifier of the incident to be replaced (this is the value returned by the POST method in the Location HTTP	Yes	string	36	GUID

		Response header)				
--	--	------------------	--	--	--	--

E.g.: / health-service-incident/v2/ohs-visitors/77764642-DBFB-4757-B8B7-E7D91EE6D230

### 2.7.1.3 Body

JSON Name (Input)	Description	Required?	Occurs (1, Many)	Type	Length	Format / Comments
<i>Same as POST endpoint</i>						

## 2.7.2 Output

### 2.7.2.1 Header

There are no non-standards output headers that the calling system should be aware of.

### 2.7.2.2 Status Code

Status Code	Description
204	No Content

For error status codes, please refer to the Error Response section.

### 2.7.2.3 Body

No body is returned.

## 2.7.3 Error Response

### 2.7.3.1 HTTP Error Status Code

Status Code	Description
400	Bad Request Application error raised by the API will return additional details in the body payload. Please see the error section for more details.
401	Unauthorized
403	Forbidden
404	Not Found
405	Method not allowed
408	Request timeout
415	Unsupported media type
500	Internal Server Error

### 2.7.3.2 Error Body

In some cases, additional error details are returned in the Response Body

Listed here is the structure:

JSON Name (Error)	Description	Required?	Occurs (1, Many)	Type	Length
errors	The parent object	Yes	Many	Object	N/A
id	Identifier of the specific error	No	1	String	
code	An application-specific error code – These are listed in the API Error Code section	Yes	1	String	
detail	A human-readable explanation specific to this occurrence of the problem.	Yes	1	String	
source	An object containing references to the source of the error, optionally including any of the following members:  pointer: a JSON Pointer [RFC6901] to the associated entity in the request document [e.g. "/data" for a primary data object, or "/data/attributes/title" for a specific attribute].  parameter: a string indicating which URI query parameter caused the error	No	1	Object	

source/pointer	JSON Pointer [RFC6901] to the associated entity in the request document [e.g. "/data" for a primary data object, or "/data/attributes/title" for a specific attribute].	No	1	JSON Pointer (string)	
source/parameter	A string indicating which URI query parameter caused the error.	No	1	String	

### 2.7.3.3 API Error Codes

A sample error response:

```
[
  {
    "id": "f7b1456c-5ef0-4c79-aab1-233325f99819",
    "code": "400-100",
    "detail": "Invalid requestThe value '85b9b52c-9a8b-444d-9dd0-bc9d196f1e0h' is not valid.",
    "source": {
      "pointer": "id"
    }
  }
]
```

## 2.8 POST /health-service-incident/v2/hazards.

### 2.8.1 Input

#### 2.8.1.1 Header

Header	Value
Content-type	application/json

#### 2.8.1.2 Parameters

Listed here are parameters that the method supports. There are two types of parameters: query parameters and path parameters (aka URI parameters). Path parameters are provided in the URI Path section and are typically defined within the {} brackets. Whereas query parameters are provided after the '?' notation.

Query Parameters can be specified for this method.

Parameter Name	Param Type	Description	Optional / Mandatory	Type	Length	Format / Comments
----------------	------------	-------------	----------------------	------	--------	-------------------

api_release_date	Query	Date identifying the specific API release that is being used	Mandatory	string	10	Format: "yyyy-mm-dd" (e.g.: 2018-12-31)
------------------	-------	--	-----------	--------	----	---

### 2.8.1.3 Body

JSON Name (Input)	Description	Required?	Occurs (1, Many)	Type	Length	Format / Comments
headers	The parent header object, containing the incident metadata	Yes	1	object		
headers/request_date_time	Timestamp of when the client made the request	Yes	1	string		Format: "yyyy-mm-ddThh:mm:ss:fffZ" (e.g.: 2018-12-31T13:52:47.922Z)
headers/incident_grouping_id	Unique identifier to group together related incidents	Yes	1	GUID		e.g.: 0b4b484c-ef87-4f71-a31b-1bc8ac45d369
data	The parent object	Yes	1	object		
data/reporters_role	Worker's role of the staff reporting the incident	Yes	1	string	200	
data/incident_date	Date of when incident occur	Yes	1	string	256	Format: "yyyy-mm-dd"
data/incident_time	Time of when incident occur	Yes	1	string	256	Format: "hh:mm tt"
data/notification_date	Date which the incident has been notified in the agency/health service system	Yes	1	string	256	Format: "yyyy-mm-dd"

data/ signoff_close_date	Sign off/close incident date	No	1	string	256	Format: "yyyy-mm-dd"
data/ organisation	Data of organisation	Yes	1	Object		Parent Object
data/ organisation/ dh_campus_code	The Department of Health allocated campus code	Yes	1	String	256	Reference data
data/ organisation/ ward_type	Ward type is the type of place, ward or other location where the incident occurred	Yes	1	String	256	Reference data
data/ organisation/ specialty_type	Specialty type is the type of unit/program responsible for the care of the affected person	Yes	1	String	256	Reference data
data/ organisation/ hs_incident_id	Hs Incident ID where the Incident occurred hs_incident_id	Yes	1	String	256	
data/ what_happened	Details of the incident	Yes	1	Object		Parent Object
data/ what_happened/ summary	Describe the brief summary of the incident	Yes	1	string	200	Free text
data/ what_happened/ details	Details of the incident	Yes	1	string	5000	Free text
data/ what_happened/ level_of_disruption	Level of disruption caused by the incident	Yes	1	int		Reference data

data/ what_happened/ level_of_impact	Level of impact of the incident	Yes	1	int		Reference data
data/ what_happened/ level_of_intervention_required	Level of intervention required for the incident	Yes	1	int		Reference data
data/ what_happened/ emergency_response_type	Type of emergency response	Yes	1	int		Reference data
data/ what_happened/ outcome_response_code_grey	The outcome of the code Grey.	Yes, only if data/ what_happened/ emergency_response_type is 3 or 11	1	string	256	Reference data
data/ event_types	Type of events that entail the incident	Yes	Many	list		Reference data (List of event code with pipe delimiters)
data/ radiation_source	Source of radiation that is related to the incident	Yes, if data/event_types contains '77'	1	string	256	Reference data
data/ organisation_management	The organisation management issue that caused the incident	Yes, if data/event_types contains '74'	1	Object		Parent object
data/ organisation_management/ problem	Details of organisation management problem that cause the incident.	Yes	Many	string	256	Reference data (List of texts with pipe delimiters)
data/ equipment	Details of equipment that cause the incident	Yes, if data/event_types contains '72'	1	Object		Parent object

data/ equipment/ problem	Problem of the equipment that cause the incident	Yes	1	string	256	Reference data
data/ equipment/ type	Type of equipment involved in the incident	Yes	1	string	256	Reference data
data/ property	Details of property involved in the incident	Yes, if data/event_types contains '76'	1	Object		Parent object
data/ property/ type	General type of the affected property	Yes	1	string	256	Reference data
data/ property/ affected	Specific type of the affected property	Yes	1	string	256	Reference data
data/ property/ problem	Problem of the property that cause the incident	Yes	1	string	256	Reference data
data/ plant_facilities	Details of plant / facilities involved in the incident	Yes, if data/event_types contains '75'	1	Object		Parent object
data/ plant_facilities/ type	General type of the affected plant/facilities	Yes	1	string	256	Reference data
data/ plant_facilities/ affected	Specific type of the affected plant/facilities	Yes	1	string	256	Reference data
data/ plant_facilities/ problem	Problem of the plant / facilities that cause the incident	Yes	1	string	256	Reference data
data/ critical_it_systems	Details of the critical IT systems involved in the incident	Yes, if data/event_types contains '71'	1	Object		Parent object
data/ critical_it_systems/ affected	Specific type of the affected critical IT systems	Yes	1	string	256	Reference data

data/ critical_it_systems/ problem	Problem of the critical IT systems that cause the incident	Yes	1	string	256	Reference data
data/ medication_management	Details of medication management that caused the incident	Yes, if data/event_types contains '73'	1	Object		Parent object
data/ medication_management/ problem	Problem of the medication management that caused the incident	Yes	1	string	256	Reference data
data/ medication_details	List of medications involved in the incident	Yes, if data/event_types contains '73'	Many	Array		List of objects
data/ medication_details/*	Details of the medication involved in the incident	Yes	1	Object		Parent object
data/ medication_details/*/ generic_name	Generic name of the medication involved in the incident	Yes	1	string	200	Free text
data/ medication_details/*/ brand_name	Brand name of the medication involved in the incident	No	1	string	200	Free text
data/ reviews	List of actions of type 'review'.	Yes	0..Many	Array		
data/ reviews/*	Data about one action of type 'review'.	Yes	0..Many	Object		
data/ reviews/*/ id	unique identifier of the action	Yes	0..Many	GUID		This needs to be a globally unique identifier, so that updates of existing actions can be distinguished from additions of new actions

data/ reviews/*/ type	Type of review	Yes	0..M any	string		Reference data
data/ reviews/*/ status	Status of review	Yes	0..M any	string		Reference data

(2) : Reference data can be retrieved from /health-service-incident/v2/reference-data end point.

**Example of payload:**

```
{
  "headers": {
    "request_date_time": "2021-04-22T05:40:43.319Z",
    "incident_grouping_id": "C048AB5E-CA67-4144-A0E0-C8DE17A9C6C3"
  },
  "data": {
    "reporters_role": "Hazard - V2",
    "incident_date": "2021-04-20",
    "incident_time": "12:15 AM",
    "notification_date": "2021-04-22",
    "signoff_close_date": "2022-04-22",
    "organisation": {
      "dh_campus_code": "16",
      "ward_location": "53",
      "specialty_unit": "177",
      "hs_incident_id": "HSID1"
    },
    "what_happened": {
      "summary": "Test summary",
      "details": "detail",
      "level_of_disruption": "35",
      "level_of_impact": "32",
      "level_of_intervention_required": "40",
      "emergency_response_type": "11",
    }
  }
}
```

```

    "outcome_response_code_grey": "3"
  },
  "event_types": "77|74|72|76|75|71|73|43|32|9|1|10|4|5|6|7|8|55|17|18|19|33|34|35|64|65|36|20|66|67|68|11|37|21|22|38|23|56|31|39|44|45|46|47|48|49|50|51|52|53|54|24|12|13|14|78|2|58|59|60|69|25|26|27|28|29|61|62|63|15|30|16|40|41|57|42",
  "radiation_source": "fluoroscopy",
  "organisation_management": {
    "problem": "ineligible/overseaspatient|public/privateclassificationerror|questionablebillingpractice|insurance/claimsmis-handled|servicenotavailable|no/inadequatechangemanagementplan|applicationprocesserror|unauthoriseddestruction/deletion|training|noncompliance|planning/rostering|workload-skillmix"
  },
  "equipment": {
    "type": "medicaldevice/equipment",
    "problem": "unsterile"
  },
  "property": {
    "type": "vehicles",
    "affected": "healthserviceowned/fleetvehicle(s)",
    "problem": "maintenancenotattended"
  },
  "plant_facilities": {
    "type": "externalsurrounds",
    "affected": "helipads",
    "problem": "fault/defect"
  },
  "critical_it_systems": {
    "affected": "nursecallsystem",
    "problem": "pestinfestation"
  },
  "medication_management": {
    "problem": "wrongstorage-temperature"
  },
  "medication_details": [
    {
      "generic_name": "Test generic name 1",
      "brand_name": "fluvax"
    }
  ]

```

```

    },
    {
      "generic_name": "Test generic name 2",
      "brand_name": "vaxigrip"
    }
  ]
}
}
}

```

## 2.8.2 Output

### 2.8.2.1 Header

Header	Value
Location	URL of the newly created incident, which includes the Incident ID, i.e. the ID of the created incident (to be used in subsequent PUT operations)

### 2.8.2.2 Status Code

Status Code	Description
201	Created

For error status codes, please refer to the Error Response section.

### 2.8.2.3 Body

Body is not required for success status codes.

## 2.8.3 Error Response

### 2.8.3.1 HTTP Error Status Code

Status Code	Description
400	Bad Request Application error raised by the API will return additional details in the body payload. Please see the error section for more details.
401	Unauthorized
403	Forbidden
404	Not Found
405	Method not allowed
408	Request timeout
415	Unsupported media type

500	Internal Server Error
-----	-----------------------

### 2.8.3.2 Error Body

In some cases, additional error details are returned in the Response Body

Listed here is the structure:

JSON Name (Error)	Description	Required?	Occurs (1, Many)	Type	Length
errors	The parent object	Yes	Many	Object	N/A
id	Identifier of the specific error	No	1	String	
code	An application-specific error code – These are listed in the API Error Code section	Yes	1	String	
detail	A human-readable explanation specific to this occurrence of the problem.	Yes	1	String	
source	An object containing references to the source of the error, optionally including any of the following members:  pointer: a JSON Pointer [RFC6901] to the associated entity in the request document [e.g. "/data" for a primary data object, or "/data/attributes/title" for a specific attribute].  parameter: a string indicating which URI query parameter caused the error	No	1	Object	
source/pointer	JSON Pointer [RFC6901] to the associated entity in the request document [e.g. "/data" for a primary data object, or	No	1	JSON Pointer (string)	

	"/data/attributes/title" for a specific attribute].				
source/parameter	A string indicating which URI query parameter caused the error.	No	1	String	

### 2.8.3.3 API Error Codes

A sample error response:

```
[
  {
    "id": "0b4b484c-ef87-4f71-a31b-1bc8ac45d369",
    "code": "400-101",
    "detail": "The value provided is not supported",
    "source": {
      "pointer": "api_release_date"
    }
  }
]
```

## 2.9 PUT /health-service-incident/v2/hazards/{id}

### 2.9.1 Input

#### 2.9.1.1 Header

Header	Value
Content-type	application/json

#### 2.9.1.2 Parameters

Listed here are parameters that the method supports. There are two types of parameters: query parameters and path parameters (aka URI parameters). Path parameters are provided in the URI Path section and are typically defined within the {} brackets. Whereas query parameters are provided after the '?' notation.

Parameter Name	Param Type	Description	Optional / Mandatory	Type	Length	Format / Comments
id	Path	Incident ID – i.e. unique identifier of the incident to be	Yes	string	36	GUID

		replaced (this is the value returned by the POST method in the Location HTTP Response header)				
--	--	---	--	--	--	--

E.g.: /health-service-incident/v2/hazards/8E59F460-C37E-4A9A-A16C-2D10547E98B8

### 2.9.1.3 Body

JSON Name (Input)	Description	Required?	Occurs (1, Many)	Type	Length	Format / Comments
<i>Same as POST endpoint</i>						

## 2.9.2 Output

### 2.9.2.1 Header

There are no non-standards output headers that the calling system should be aware of.

### 2.9.2.2 Status Code

Status Code	Description
204	No Content

For error status codes, please refer to the Error Response section.

### 2.9.2.3 Body

No body is returned.

## 2.9.3 Error Response

### 2.9.3.1 HTTP Error Status Code

Status Code	Description
400	Bad Request  Application error raised by the API will return additional details in the body payload. Please see the error section for more details.
401	Unauthorized
403	Forbidden
404	Not Found
405	Method not allowed

408	Request timeout
415	Unsupported media type
500	Internal Server Error

### 2.9.3.2 Error Body

In some cases, additional error details are returned in the Response Body

Listed here is the structure:

JSON Name (Error)	Description	Required?	Occurs (1, Many)	Type	Length
errors	The parent object	Yes	Many	Object	N/A
id	Identifier of the specific error	No	1	String	
code	An application-specific error code – These are listed in the API Error Code section	Yes	1	String	
detail	A human-readable explanation specific to this occurrence of the problem.	Yes	1	String	
source	An object containing references to the source of the error, optionally including any of the following members:  pointer: a JSON Pointer [RFC6901] to the associated entity in the request document [e.g. "/data" for a primary data object, or "/data/attributes/title" for a specific attribute].  parameter: a string indicating which URI query parameter caused the error	No	1	Object	
source/pointer	JSON Pointer [RFC6901] to the associated entity in the request	No	1	JSON Pointer (string)	

	document [e.g. "/data" for a primary data object, or "/data/attributes/title" for a specific attribute].				
source/parameter	A string indicating which URI query parameter caused the error.	No	1	String	

### 2.9.3.3 API Error Codes

A sample error response:

```
[
  {
    "id": "f7b1456c-5ef0-4c79-aab1-233325f99819",
    "code": "400-100",
    "detail": "Invalid request. The value '85b9b52c-9a8b-444d-9dd0-bc9d196f1e0h' is not valid.",
    "source": {
      "pointer": "id"
    }
  }
]
```

## 2.10 DELETE /health-service-incident/v2/delete/{id}

### 2.10.1 Input

#### 2.10.1.1 Header

Header	Value
Content-type	application/json

#### 2.10.1.2 Parameters

Listed here are parameters that the method supports. There are two types of parameters: query parameters and path parameters (aka URI parameters). Path parameters are provided in the URI Path section and are typically defined within the {} brackets. Whereas query parameters are provided after the '?' notation.

Parameter Name	Param Type	Description	Optional / Mandatory	Type	Length	Format / Comments
id	Path	Incident ID – i.e. unique	Mandatory	string	36	GUID

		identifier of the incident to be deleted (this is the value returned by the POST method in the Location HTTP Response header)				
--	--	---	--	--	--	--

E.g.: /health-service-incident/v2/delete/A60FC797-2822-4C1A-95E9-9E1979115329

### 2.10.1.3 Body

JSON Name (Input)	Description	Required?	Occurs (1, Many)	Type	Length	Format / Comments
N/A						

## 2.10.2 Output

### 2.10.2.1 Header

There are no non-standards output headers that the calling system should be aware of.

### 2.10.2.2 Status Code

Status Code	Description
204	No Content

For error status codes, please refer to the Error Response section.

### 2.10.2.3 Body

No body is returned.

## 2.10.3 Error Response

### 2.10.3.1 HTTP Error Status Code

Status Code	Description
400	Bad Request Application error raised by the API will return additional details in the body payload. Please see the error section for more details.
401	Unauthorized
403	Forbidden

404	Not Found
405	Method not allowed
408	Request timeout
415	Unsupported media type
500	Internal Server Error

### 2.10.3.2 Error Body

In some cases, additional error details are returned in the Response Body

Listed here is the structure:

JSON Name (Error)	Description	Required?	Occurs (1, Many)	Type	Length
errors	The parent object	Yes	Many	Object	N/A
id	Identifier of the specific error	No	1	String	
code	An application-specific error code – These are listed in the API Error Code section	Yes	1	String	
detail	A human-readable explanation specific to this occurrence of the problem.	Yes	1	String	
source	An object containing references to the source of the error, optionally including the following members:  pointer: a JSON Pointer [RFC6901] to the associated entity in the request document.	No	1	Object	
source/pointer	JSON Pointer [RFC6901] to the associated entity	No	1	JSON Pointer (string)	

	in the request document.				
--	--------------------------	--	--	--	--

### 2.10.3.3 API Error Codes

A sample error response:

```
[
  {
    "id": "63eb8359-966b-4f0a-8c64-33ebfbe68f7d",
    "code": "400-101",
    "detail": " Incident not found",
    "source": {
      "pointer": " IncidentNotFound"
    }
  }
]
```

-- END OF DOCUMENT --